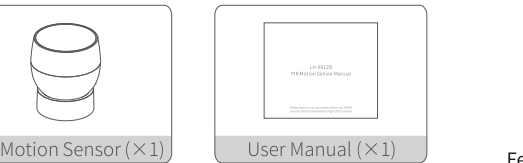


LH-961ZB PIR Motion Sensor Manual

Please read this manual carefully before use, iHORN reserves the final interpretation right of this manual

Packing List

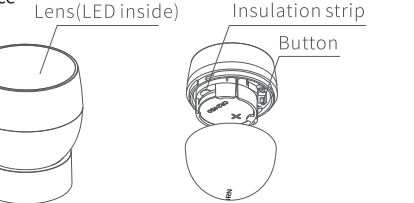
Make sure the device & accessories complete after unpack as below.



Batteries (battery pack or batteries installed) shall not be exposed to excessive heat such as sunshine, fire or the like.

Appearance & Feature

Appearance



Feature

The device is compact and beautiful, with flexible installation and the angle can be adjusted freely. It can determine whether there are people moving in its detection area through the perception of people infrared light emitted by the body. It can realize different intelligent linkage by working with gateway.

- Wireless data transmission
- Digital temperature compensation
- Low power consumption, long battery life
- Magnetic base, flexible and convenient installation
- Periodic supervision
- Low voltage reminder

Product usage

Install iHORN Smart Life App

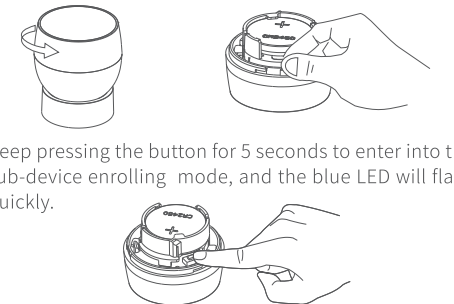
Scan the QR code below to download the "iHORN Smart Life " App.

Or search for " iHORN Smart Life " in App Store or Google Play to download and install, and create a new account.



Add Device

1. Connect your phone to your home Wi-Fi.
2. Add gateway to the App according to the gateway user guide.
3. After the gateway is successfully added, open the "iHORN Smart Life" App, click to enter the gateway page, click "Add", select "PIR Motion Sensor", and follow the prompts for subsequent operations.
4. Turn counterclockwise to open the front cover of the product, remove the battery insulation strip, the blue LED will flash quickly, and the device automatically enters into the enrolling mode.



5. Keep pressing the button for 5 seconds to enter into the sub-device enrolling mode, and the blue LED will flash quickly.
6. Click "Confirm indicator rapidly blink" in the APP, the gateway voice prompts to enter into the sub-device enrolling mode.

Reset the device first.

Power on the device and confirm that indicator light rapidly blinks



Confirm indicator rapidly blink

7. Wait for the PIR motion sensor to be added successfully.

Hereby, China Security & Fire IoT Sensing Co., Ltd. declares that the radio equipment type is in compliance with Directive 2014/53/EU. The full text of the EU declaration of conformity is available at the following internet address: <http://www.ihorn-tech.com/Service/Download.html>

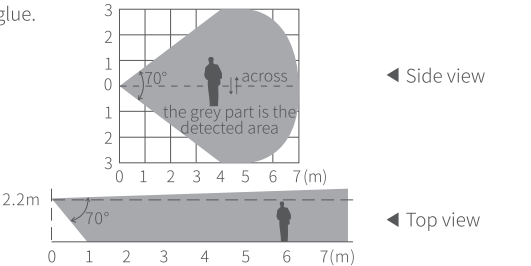
Special instructions:

- (1)The product comply with RF specifications and technical standards, which can be used in a small communication range;
- (2)The product comply with the DOC statement.

Manufacturer: China Security & Fire IoT Sensing Co., Ltd.
Address: The 4th Building, 1st floor of the 5th Building, New and High Technology Industrial Park, Guangming, Wandaiheng, Baoan, Shenzhen, China

Installation Instruction

1. Installation position should be chosen at the area where the intruder may break into. Try to make the intruder across the detection area. As shows in the figure. The product can be put on the desk, also can be stick to the wall through 3M glue.



◀ Side view

◀ Top view

Notice

1. This product is indoor use only. Please follow the user guide to install and use correctly. Please do not touch the lens to avoid affecting the sensitivity of the product. If the lens needs to be cleaned, please remove the battery and wipe with a soft cloth and a little alcohol.
2. Avoid the device working under the environment where the temperature changes a lot. Installation location should avoid closing to air conditioners, electric fans, refrigerators, ovens and other things that can cause temperature changes, and avoid direct sunlight on the product.
3. There should be no object shielding in front of the product to avoid affecting the detection result.
4. Building barriers (such as walls) will shorten the distance of wireless communication.

5. This product can reduce the accident happening, but can't make everything alright. For your safety, except use this product correctly, please improve our vigilance in our daily life, strengthen the sense of its safety precaution, and maintain it regularly.
6. Please remove the battery and keep safe, if you don't use this product for a long time.

Function Instruction

1. This product shall be used with a gateway. When using this product for the first time or replacing the gateway, it shall be enrolled with a gateway.
2. Please follow the steps of adding sub-devices to add this product to the gateway.
3. Double-click the product button to enter the test mode, under which the product is always in the state of triggering. If there is no trigger within five minutes, the product will enter the working mode. After each trigger in working mode, it will enter a minute sleep state and then enter working mode again.
4. This product has the function of low voltage reminder. When the battery voltage of the product is low, the sensor will send low voltage reminder to the gateway.

Technical Parameter

Wireless protocol	ZigBee 3.0
Transmit frequency	2.4000~2.4835GHz
Battery type	CR2450
Static current	≤10μA
Working temperature	-10℃~+55℃
Working humidity	≤95%RH
Detection distance	7m
Detection angle	70°
Installation height	2.2m
Dimension	φ40×48mm

Restore Factory Setting

When the device is powered on, the blue LED will flash quickly after pressing the button for 5 seconds, and the sensor will automatically enter into enrolling after restore factory setting.

Guarantee

- Dear users, thank you for choosing our products. Please read the following content carefully before installing and using this product:
1. The warranty period is one year from the purchase date, and we will provide free repair for any failure caused by the quality of the product itself under normal use. If you have quality problems within 7 days from the purchase date, you can enjoy free replacement.
 2. The following conditions are not covered by the warranty:
 - Failure or defect caused by improper use environment or conditions;
 - Failure or damage caused by other issues than the design, technology, production, product quality;
 - Malfunctions or defects caused by the use of third-party products, software or components;

- Malfunction or defect caused by improper installation, incorrect use, unauthorized repair, modification, accident, force majeure or other external reasons;
 - The product has exceeded the warranty period.
- The final interpretation right belongs to China Security & Fire IoT Sensing Co., Ltd.