

Annotation and linkage programming software version 1.3 introduction

Annotation and linkage programming software version 1.3 is used with our company TC5000 series controller (see table below for models) supporting the application software. After programming by the software , the corresponding annotation and linkage text file TCZS***.TC (annotation file) or TCLD***.TC (linkage file) will be generated. . If JB-TB-TC 5109 is selected, it will be generated as TCZS.TXT (annotation file) or TCLD.TXT (linkage file), to store in the root path of a blank USB flash drive Plug in the controller's USB interface , Use the data import function of the controller (refer to the instructions of the corresponding controller for details) , put the programming results into the controller , It can also read the files exported from the controller to re-edit them . It's convenient to programming on-site and maintenance management.

JB-TG-TC5000 Automatic Fire Alarm Control Panel (Linkage)
JB-TB-TC5100 Automatic Fire Alarm Control Panel (Linkage)
JB-TB-TC5120 Automatic Fire Alarm Control Panel (Linkage)
JB-LT-TC5200 Automatic Fire Alarm Control Panel (Linkage)
JB-QB-TC5160 Automatic Fire Alarm Control Panel (Linkage)
JB-QB-QTC5015 Gas Fire-extinguishing Control Panel
JB-DH-TC5600 Electrical Fire Monitoring Equipment
JB-KR-TC5306 Combustible Gas Alarm Control Panel
TC-FH5800 Fire Door Monitor
TC-DJK5700 Power Status Monitor for Fire Equipment
JB-TB-TC5130M Household Fire Alarm Control panel (Embedded)
JB-TB-TC5109 Fire Alarm Control panel

Annotation and linkage programming software running environment

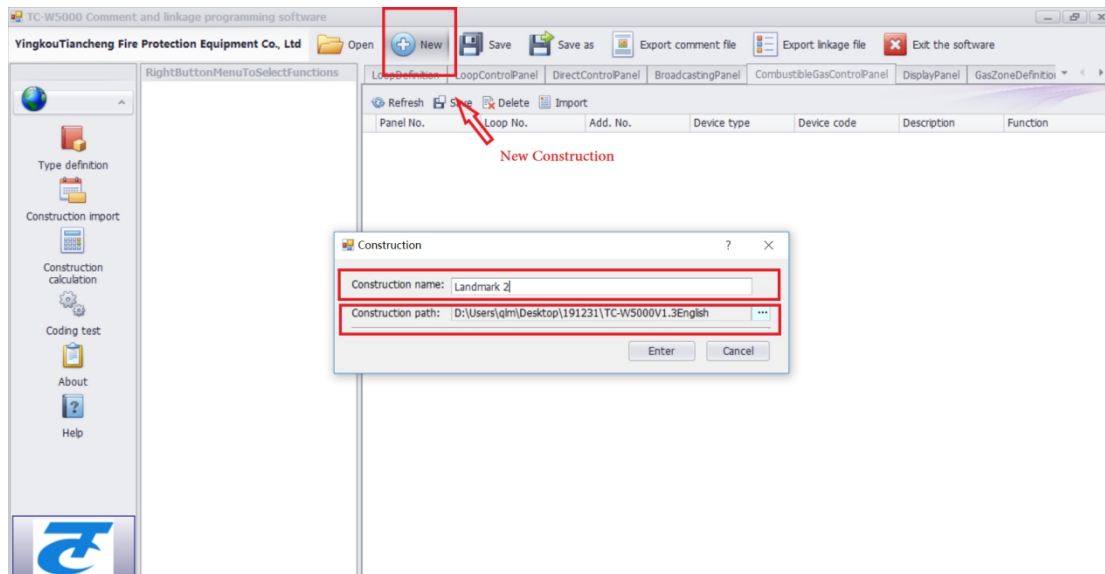
WIN7,WIN8,WIN10 Running as an administrator

Microsoft .NET Framework 4.5

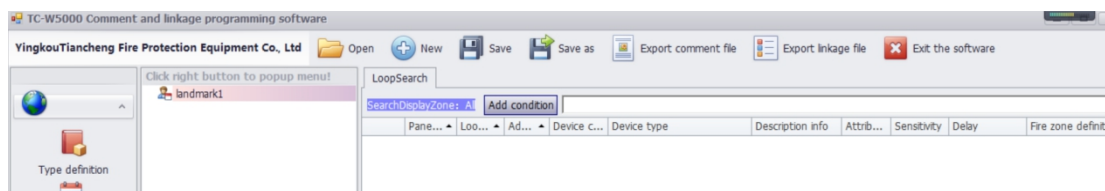
Take JB-TB-TC5109 Fire Alarm Control panel as an example:

1、Construction project

Click on the new construction icon

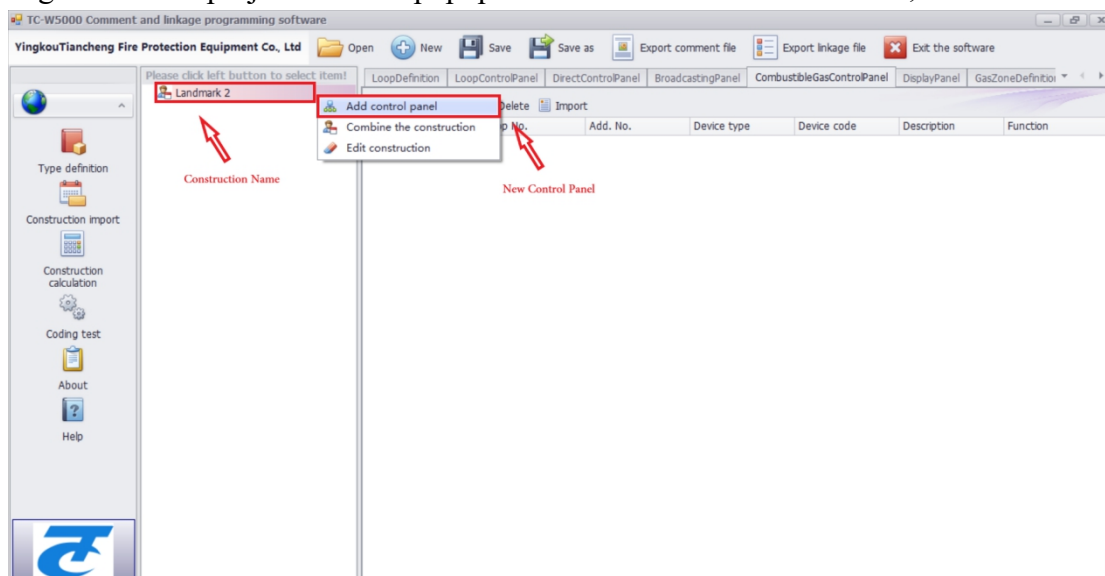


Fill in the project name and path (for example : construction name :Landmark 1)



2、Add controller

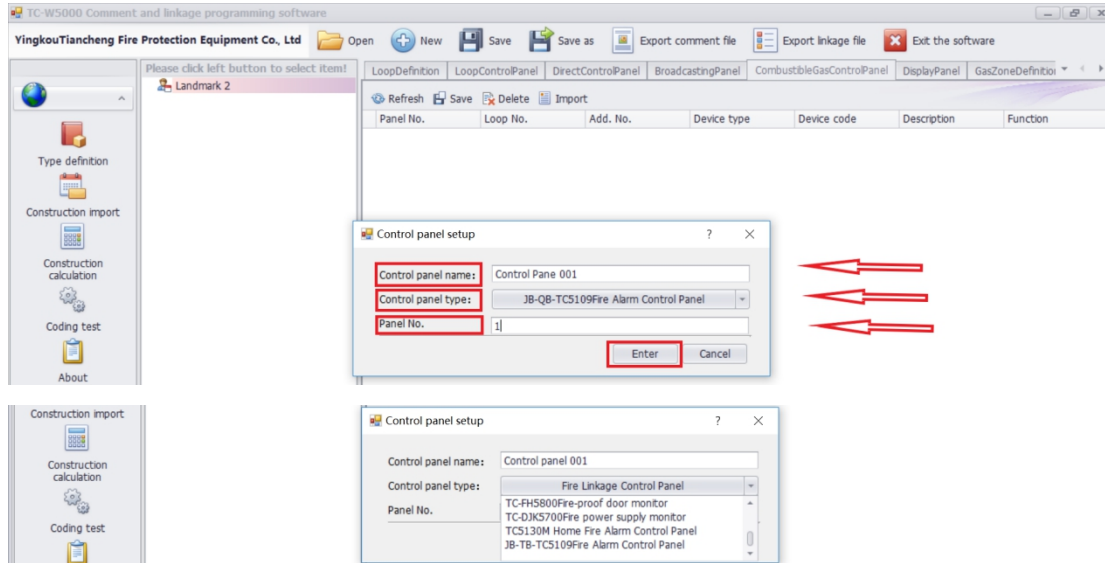
Right-click the project name to popup the menu and add the controller;



Then edit the Control panel name (for example : Control Panel 001).

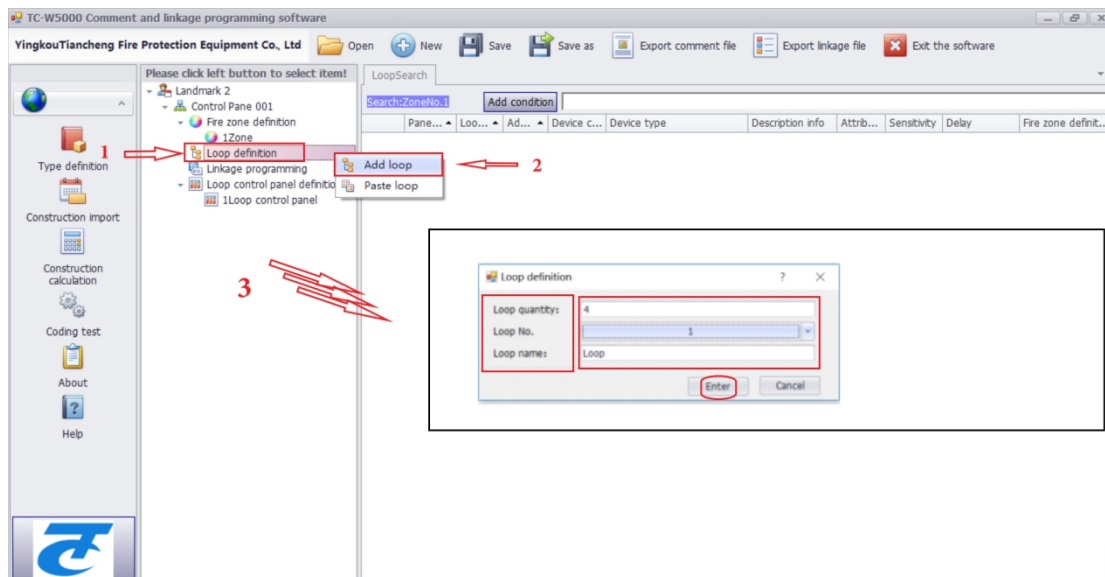
Select the Control panel type (for example : TC5109 controller).

Edit the Control panel No. Select the number of controllers as needed And click “enter” into .



3、Edit the loop , Loop Definition

First, right click Loop Definition to add Loop .

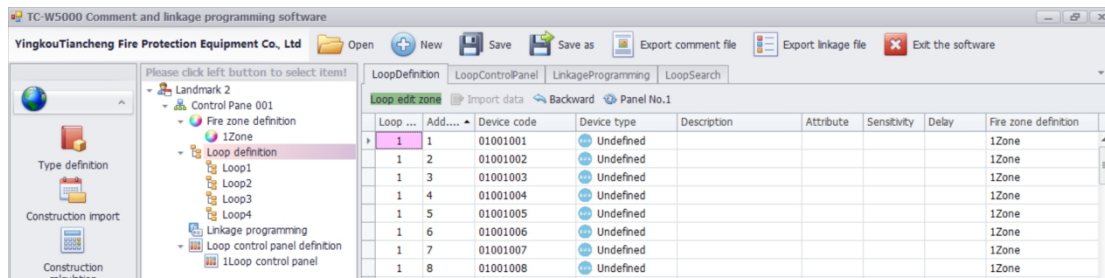


Then, edit the loop definition.

Loop quantity : 4 (as actual needed)

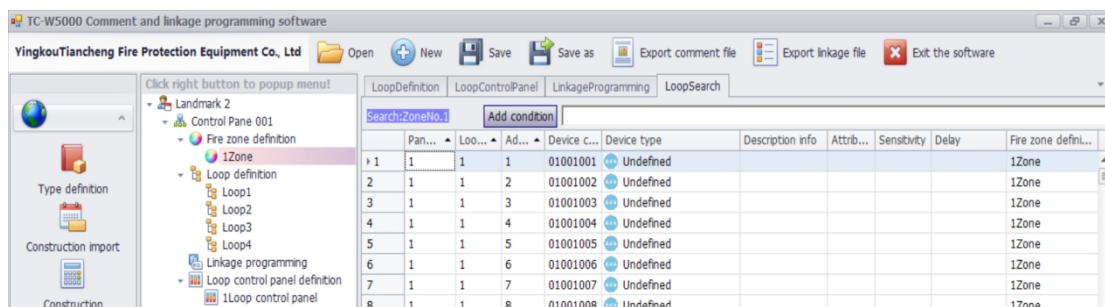
Loop No. : Selective loop number

Loop Name: Edit loop name (for example : loop)



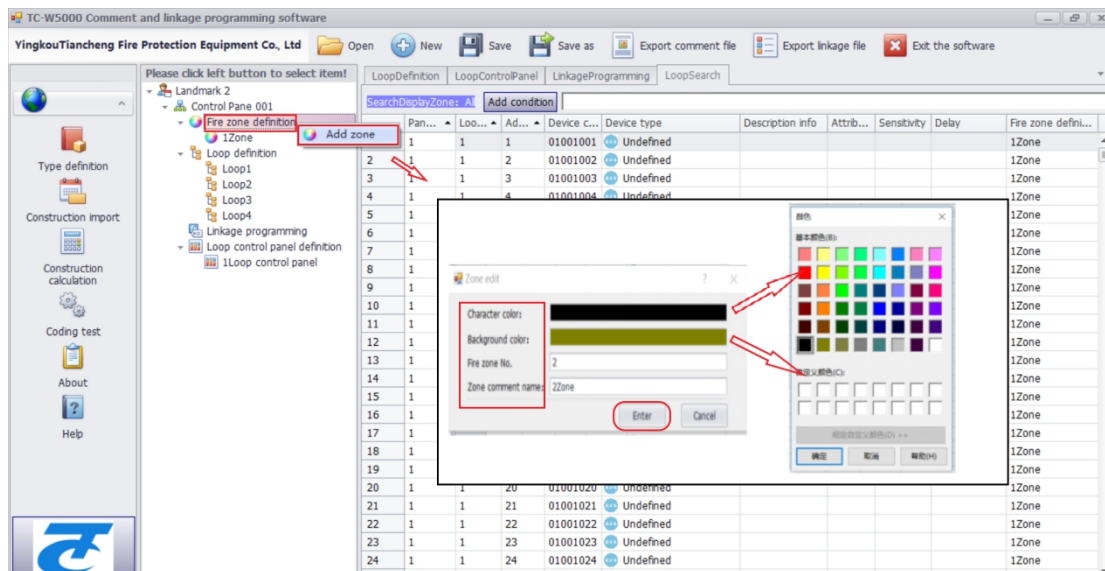
4、 Edit the controller zone

4.1 Controller automatically generates a zone, the zone automatically generates the name 1Zone, right click to modify the zone name.



4.2 Add a new partition

Fire Zone Definition, right click on the Fire Zone Definition, select to add zone.



To select Character color:

Editable character color, used to distinguish different zones within programming software.

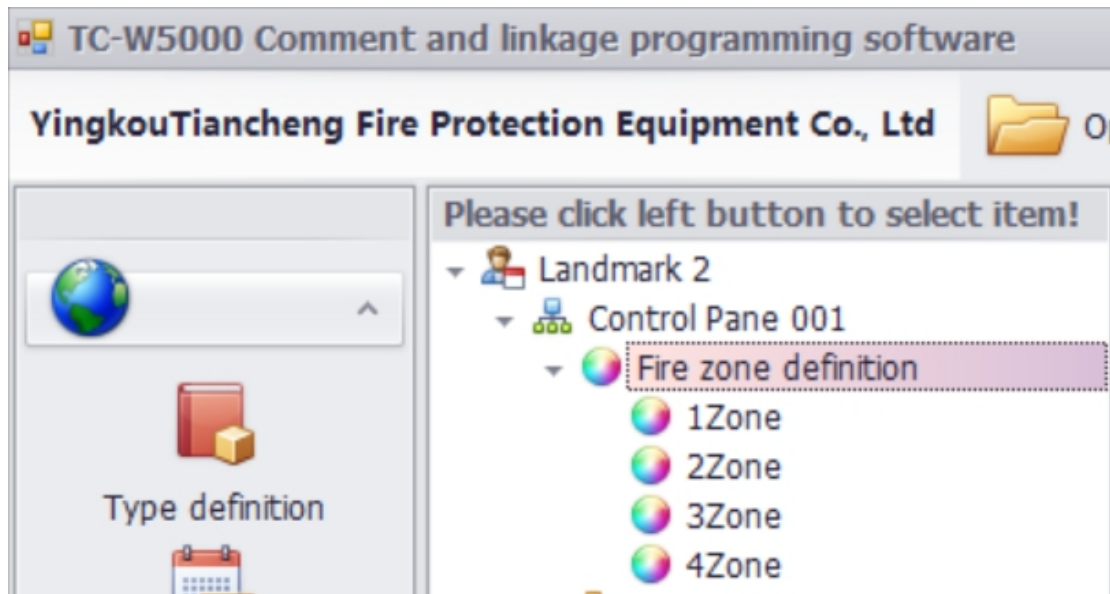
Background color: Editable background color, used to distinguish different zones within programming software.

Fire zone No. : Fire zone number.

Zone comment name: The name of the area.

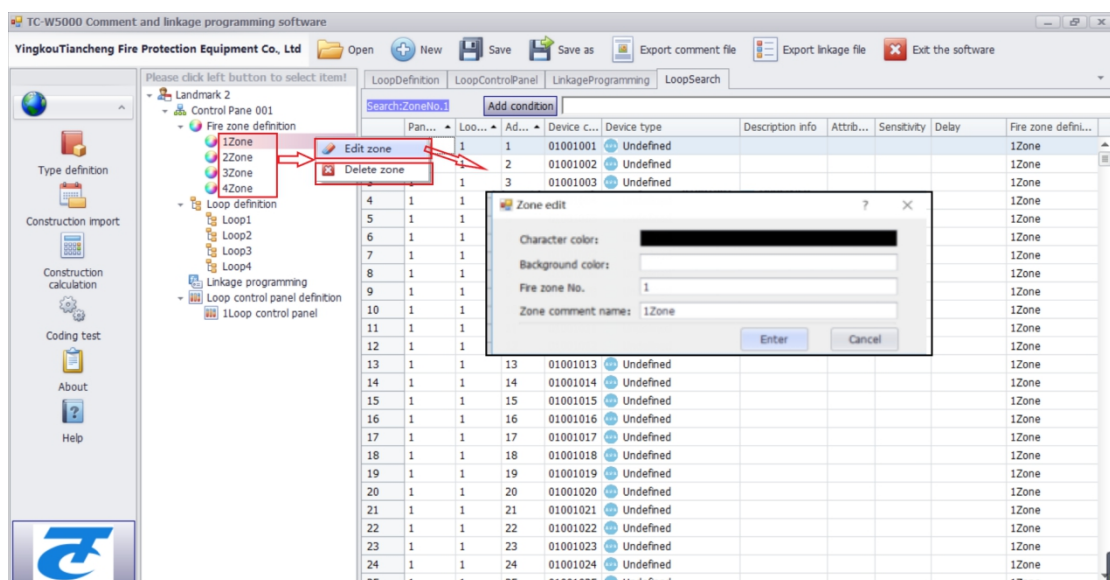
You can re-edit the zone name, zone number, color, etc.

In the same way, multiple zones can be added, depending on the actual needs and product characteristics.



4.3 Modify/Edit zone information

Right-click the zone name to be modified and click “edit zone”.



Enter Zone edit information, see 4.2 for details.

4.4 Delete the zone

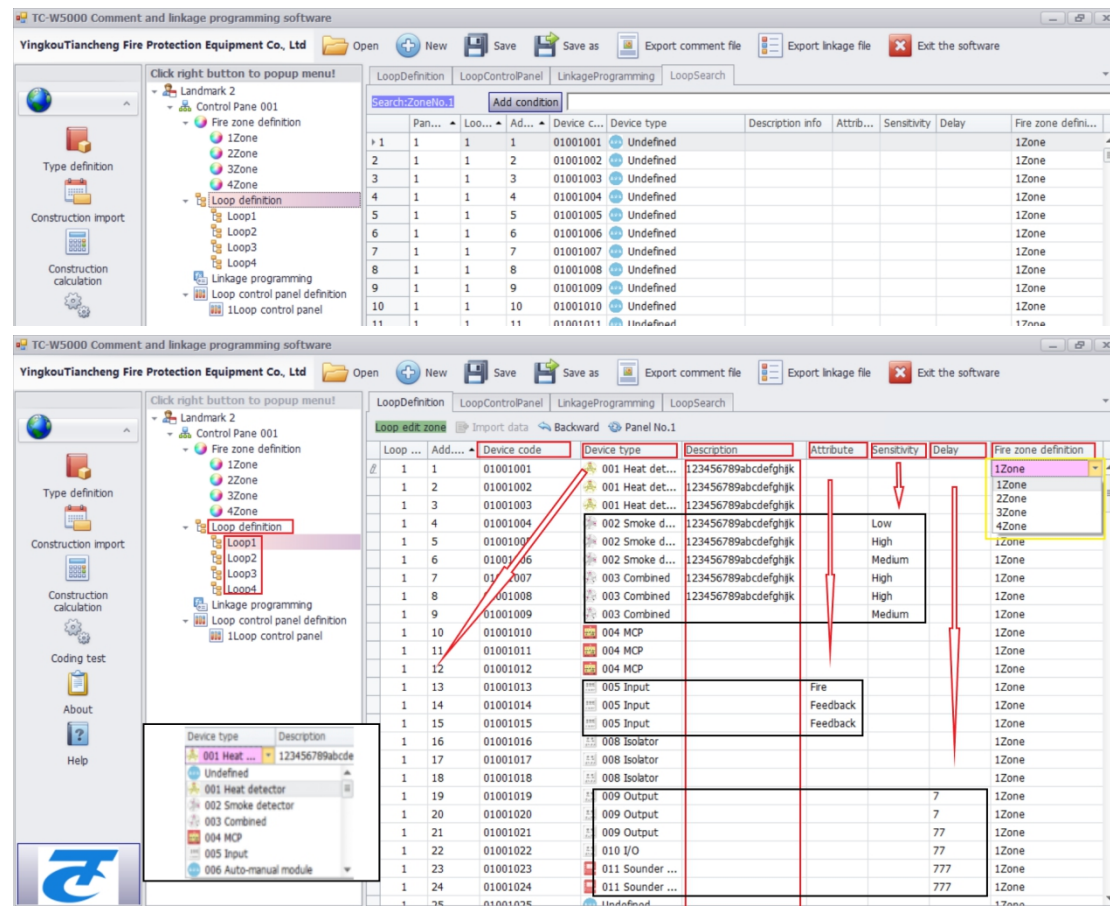
Right click to delete the zone name, click the delete zone button

Note: TC5160 ,TC5120 ,TC5100,TC5000,TC5200 Since the above control panels

have no zones, you do not need to define zones when editing the above controller.

5、Loop edit

Click the loop name and enter the loop editing interface:



5.1 Device Type:

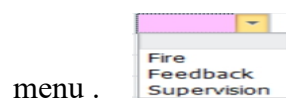
Left-click, select the device name from the drop-down menu.

5.2 Description of equipment information

20 characters is the maximum to edit.

5.3 Attribute definition

This section is for the Input module only and can be selected through the drop-down



Fire alarm; Feedback ; Supervision (Monitoring does not apply to TC5109)

When the input module is connected to a Fire detector, set the attribute to Fire.
When the input module is connected to the pressure switch, please set the attribute to Feedback.

5.4 Sensitive

This part only for Smoke detector & combined detector to set different sensitivity(high, medium and low). If not need to set , the default is low sensitivity.

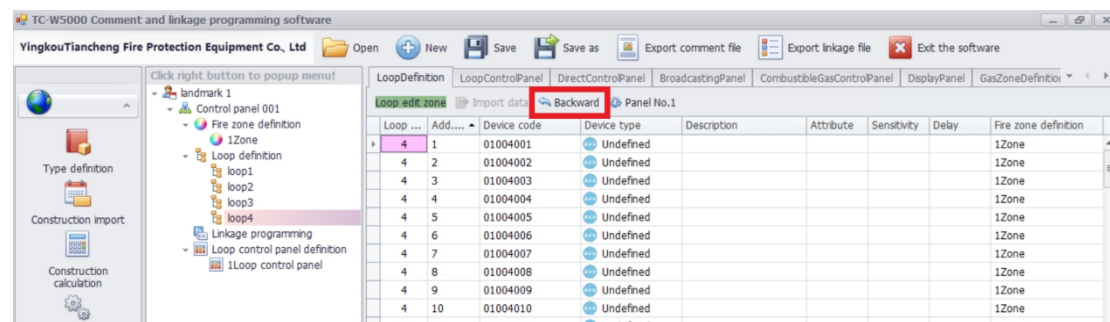
5.5 Time delay is set

This part only for I/O module , Fire alarm module and etc .
Delay time - unit second can be set according to the actual situation.

5.6 Fire zone selection

Under the Fire zone Definition column, select different devices into the corresponding zone by drop-down menu (see article 4 for details). Device code changes as the zone changes.

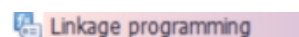
5.7 Click back to undo the last batch of changes



This software supports batch selection, first select the table to be processed by batch , then select options.

6 Linkage programming

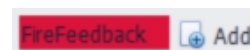
Left-click "linkage programming" in the project



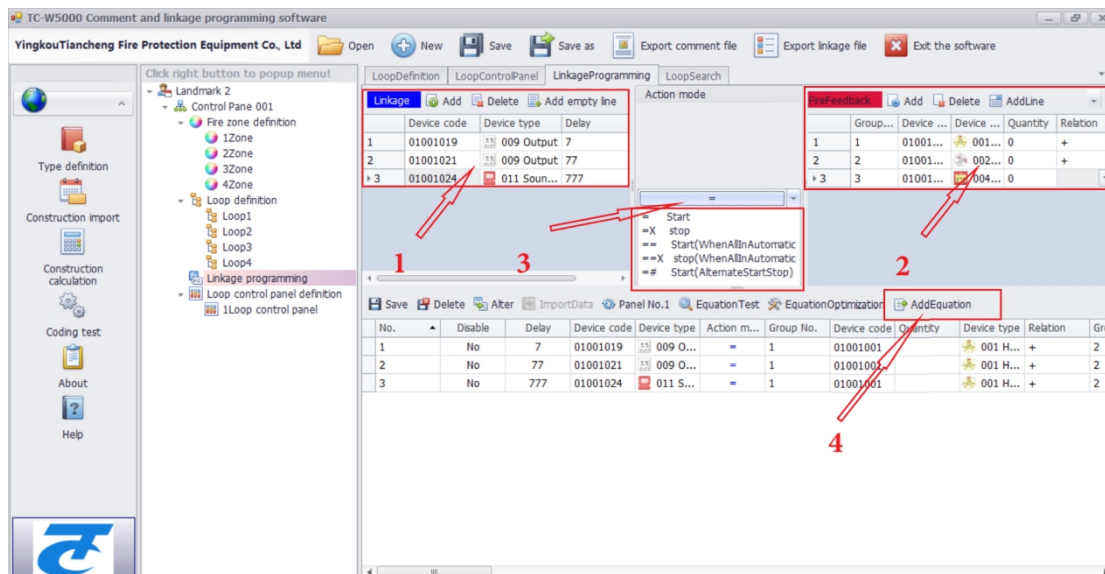
Left click "add" in the linkage programming Linkage area




Left-click the linkage programming Alarm area "add"

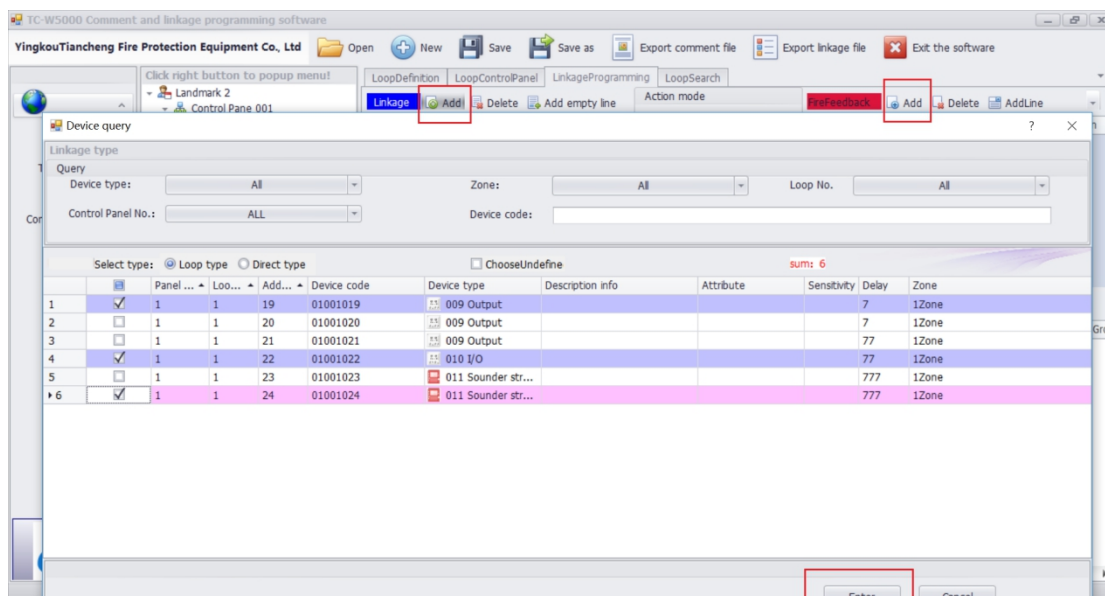


Can add the linkage output device and dedicated line device.

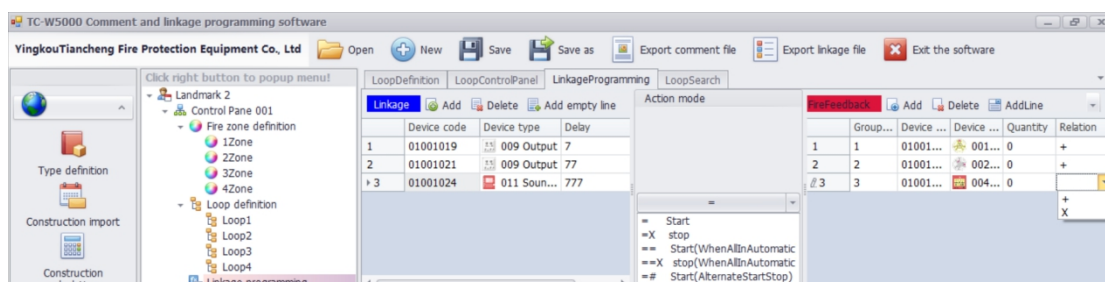


6.1 Click linkage programming "add" ,  select the equipment.

6.1.1 Optional existing equipment

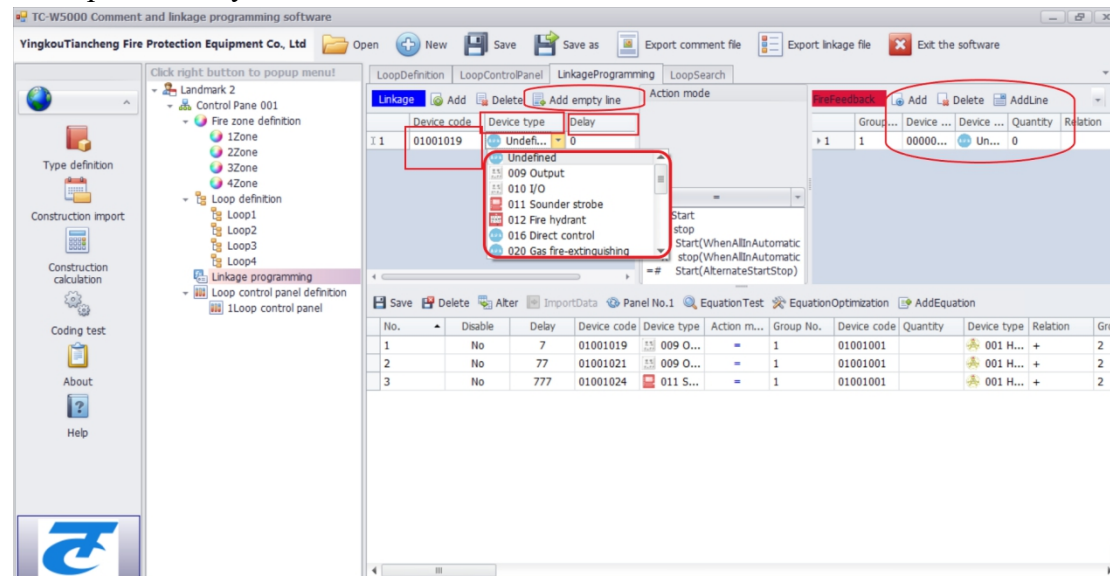


Set the Delay time as needed in the Delay.

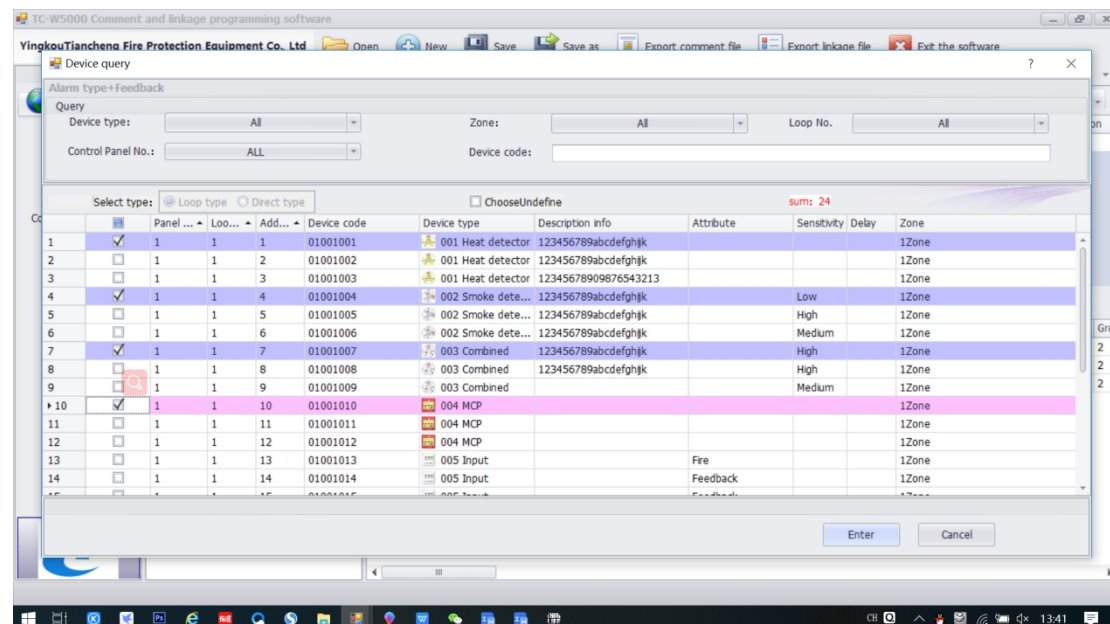


6.1.2 Blank lines can be added

Enter the device code and check the device type , for the use of the wildcard "*" , The "*" represents any number from 0 to 9.

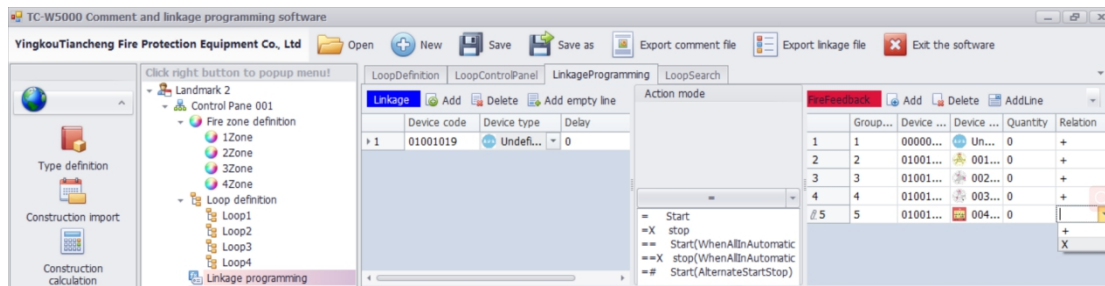


6.2 Left-click the linkage programming Alarm area "add"



Relation option .

In the red box area select formula relationships with (x) or (+) programming , to select by the drop-down option: The "+" relationship means that one of the actions is valid , "X" is the relation of "and", that is, it must satisfy all the conditions of "X" to be valid;



6.3 Action mode.

= "start".

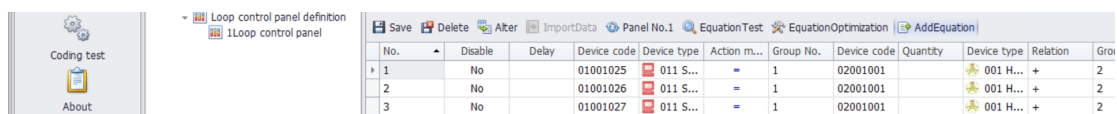
=X "stop".

= = "Start" (WhenAllInAutomatic)

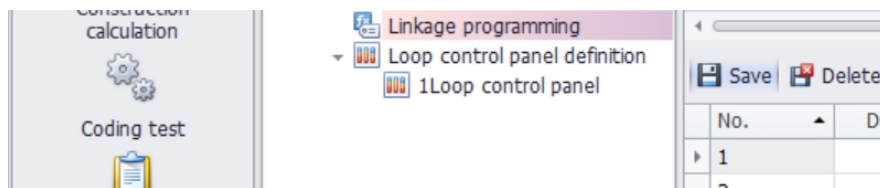
= = x "Stop" (WhenAllInAutomatic)

= # "Start" (AlternateStartStop) Start / stop alternate , the intervals during alternate ,set it in the controller.

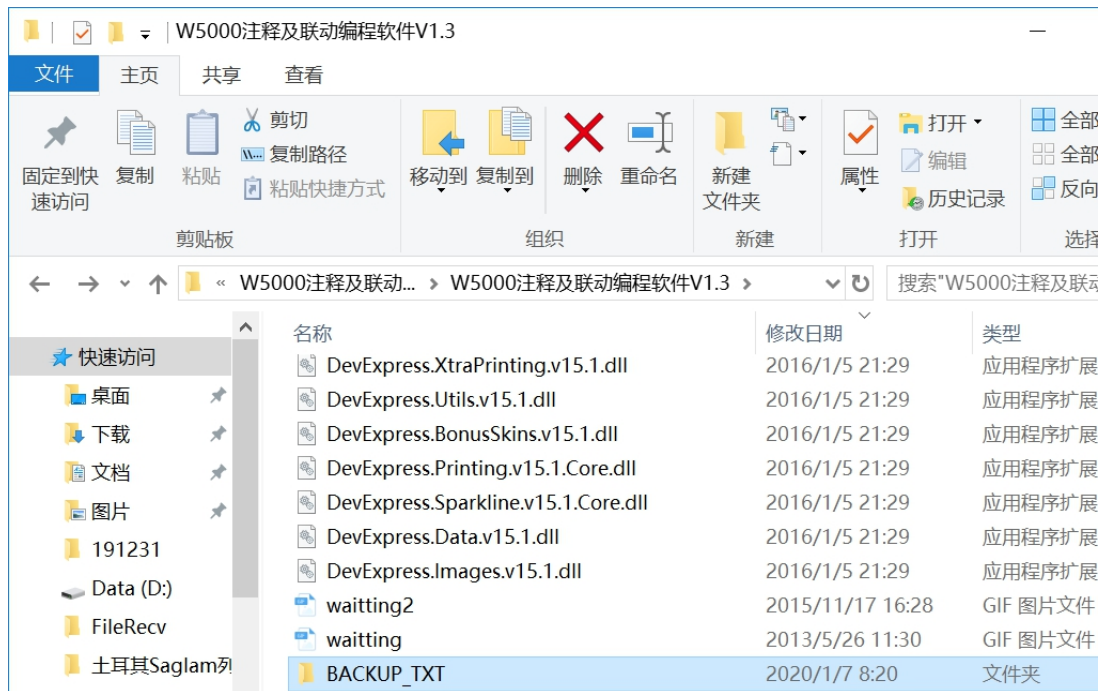
6.4 To generate the formula



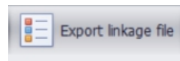
Left-click to save formula in linkage programming formula area:



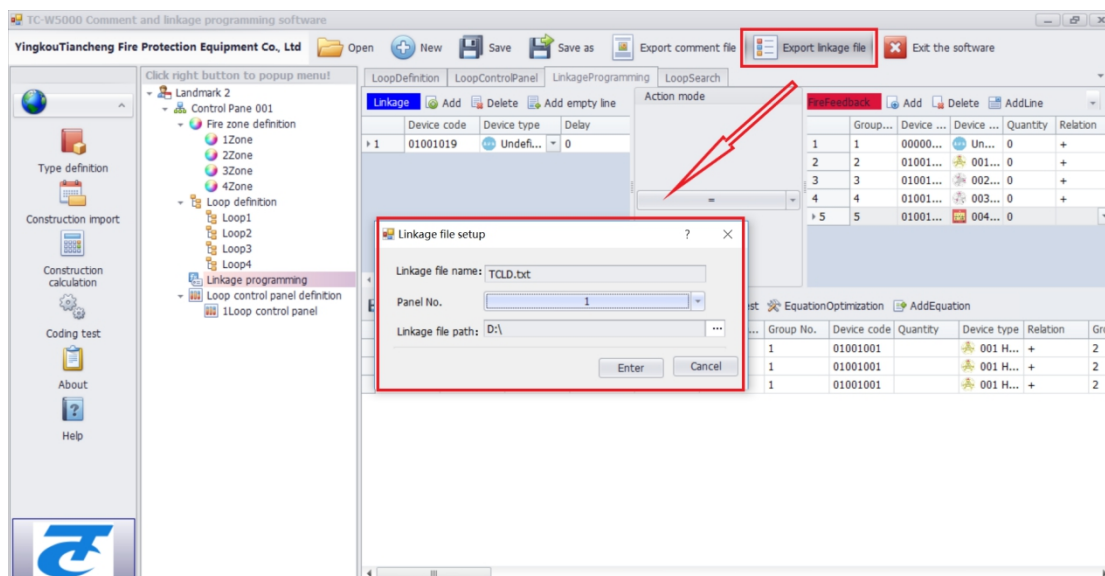
You can save linkage programming , Simultaneously generate the backup text file "*.LD" The saving time as the file name . The file location is in the software file , in the backup_TXT.



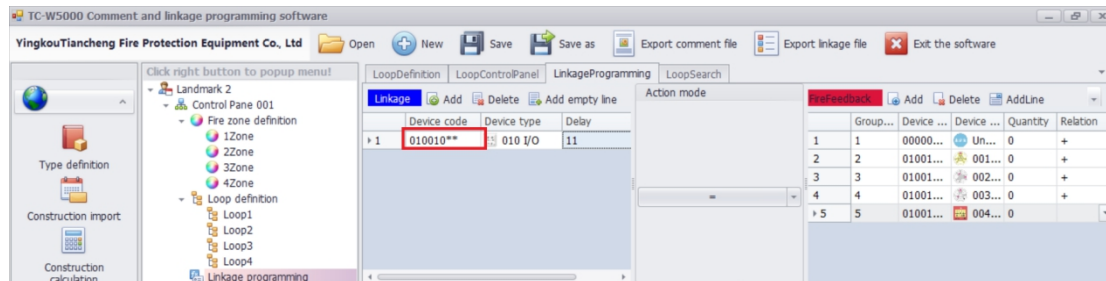
6.5 Input



The output file is in the root directory , TCLD.TXT file .

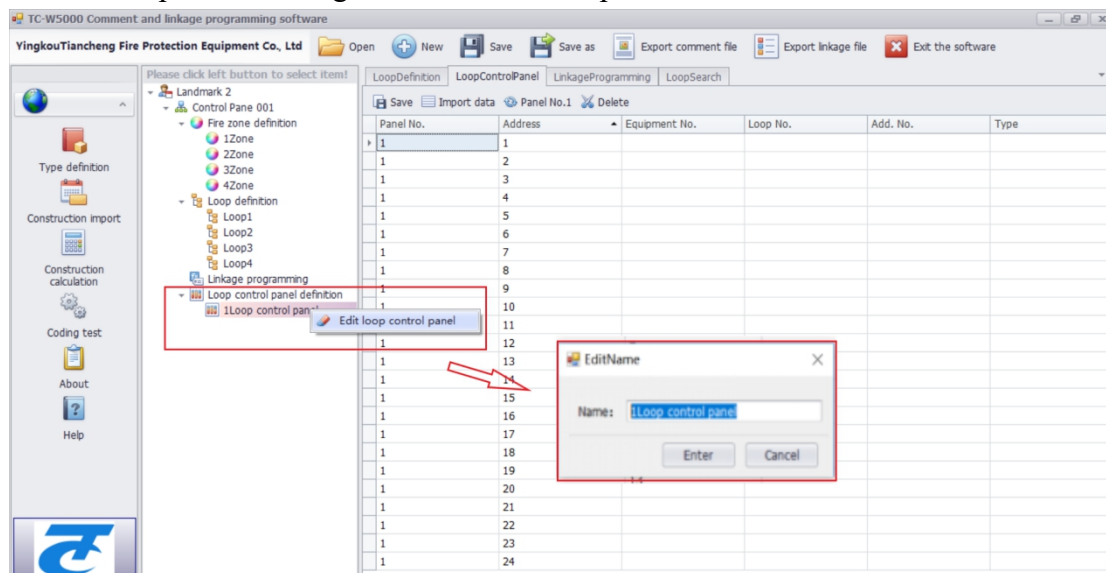


6.6 In the formula, the device code contains the representation of **, the address is optimized, and the formula corresponding to the same device code is NO. 00-99. In the process of linkage programming, * characters can be used to replace the encoding according to specific needs, (* corresponds to 0-9).



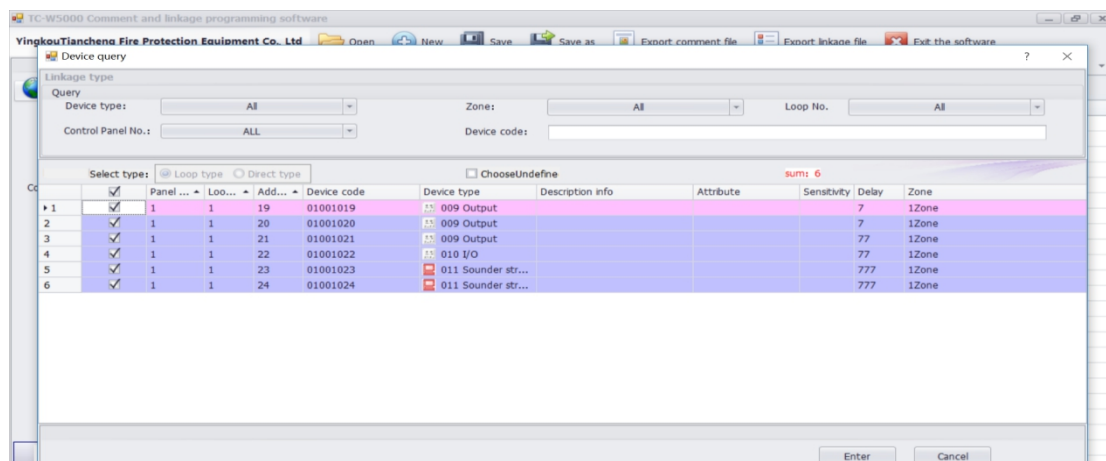
7 Circuit bus control panel

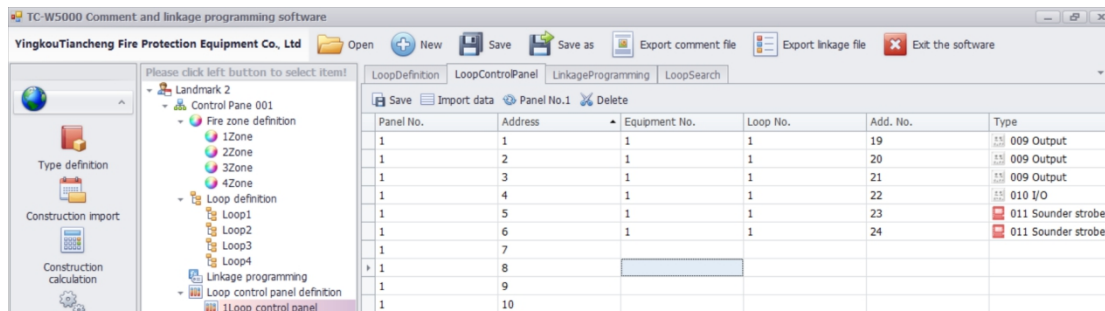
7.1 Edit loop bus disk , right-click the control panel to edit the name.



7.2 Edition

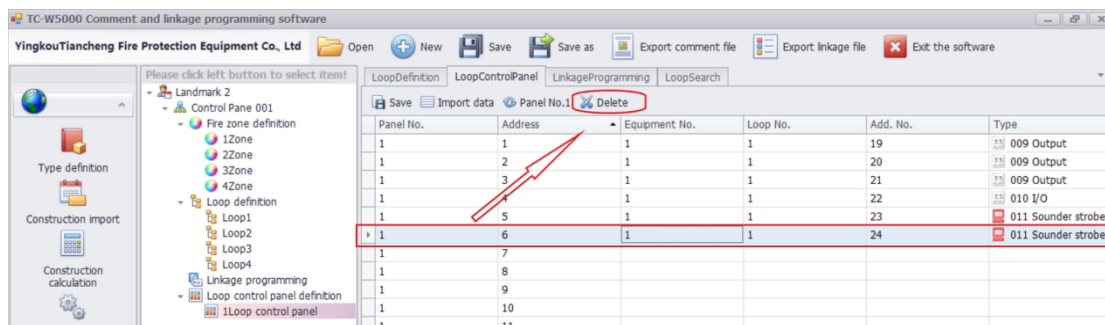
Click the blank box to enter the editing interface and tick the item you want to edit.



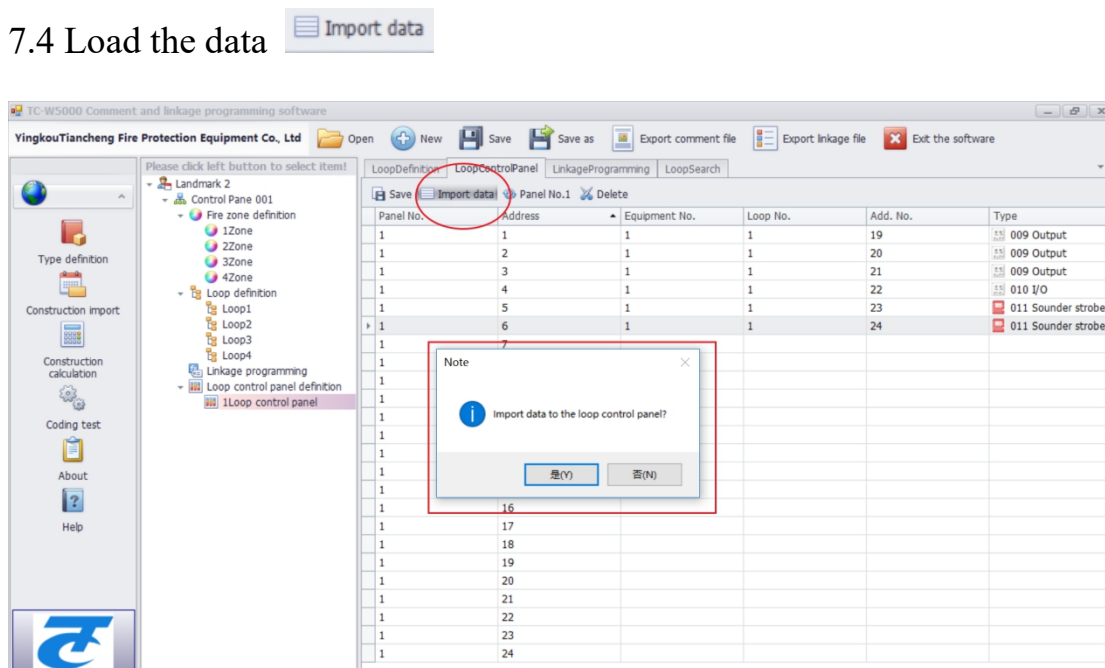


7.3 Delete

Left button to select the middle line and click” Delete “ to Delete it.



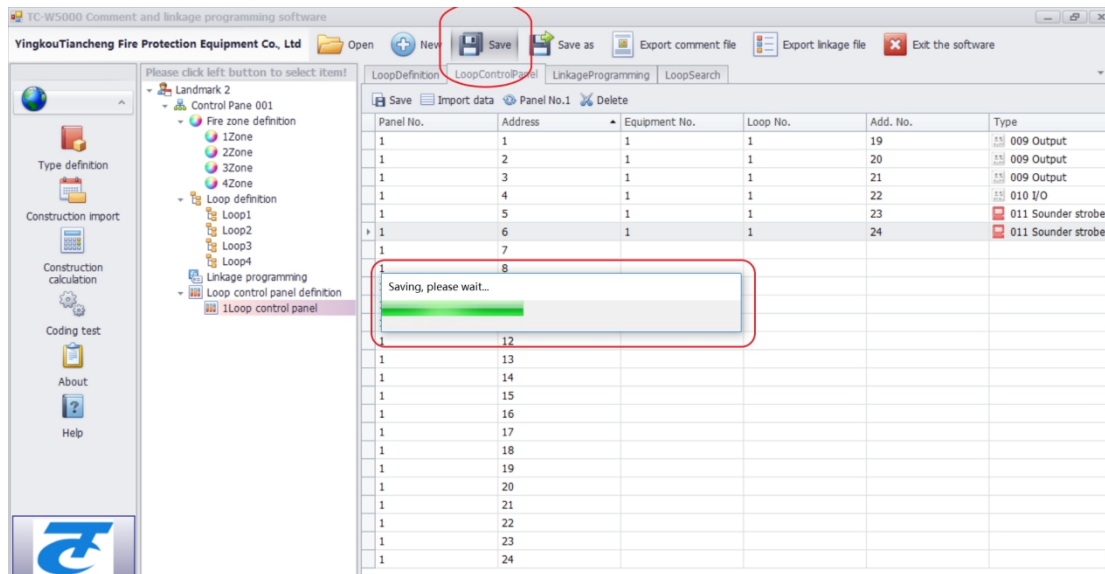
7.4 Load the data



Existing data can be reedited by loading

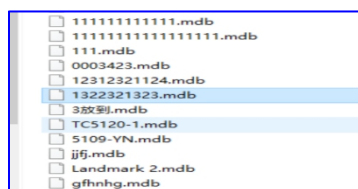
8 To save file and re-open

During or after the operation, to save in time, the file is in the editing software Installation folder .



The file will be saved as the .mdb file. All project information is saved in this file.

Next time, it can be opened and re-edited.



Supplemental Document 01

How To Download Program File From FACP And Re-Edit

1、FACP 's program and comment file export

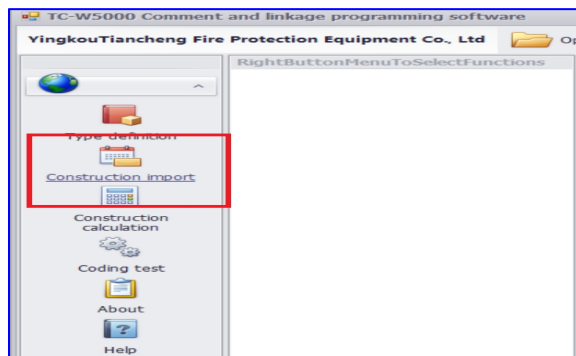
Operating path: plug in the USB flash disk to the main board:
 MANU---7---2 off line program ---3 upload 2nd code to USB
 MANU---7---2 off line program ---4 upload program to USB

Program files import to the program software

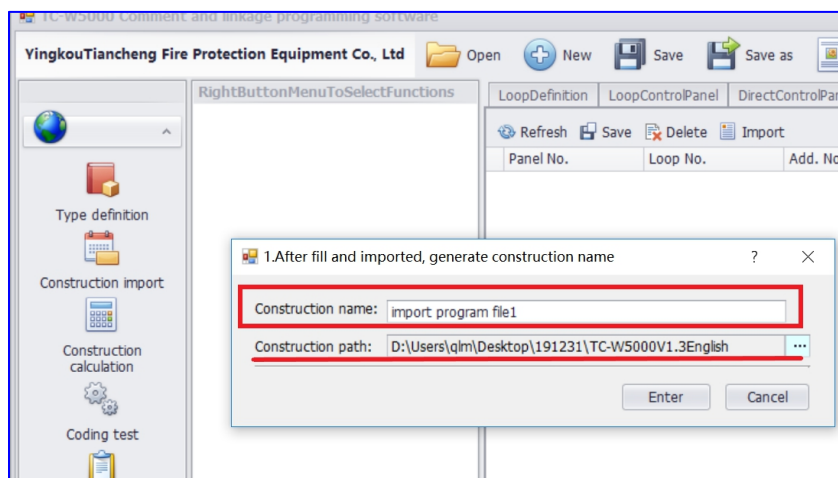
Plug USB to PC

Open the program software,

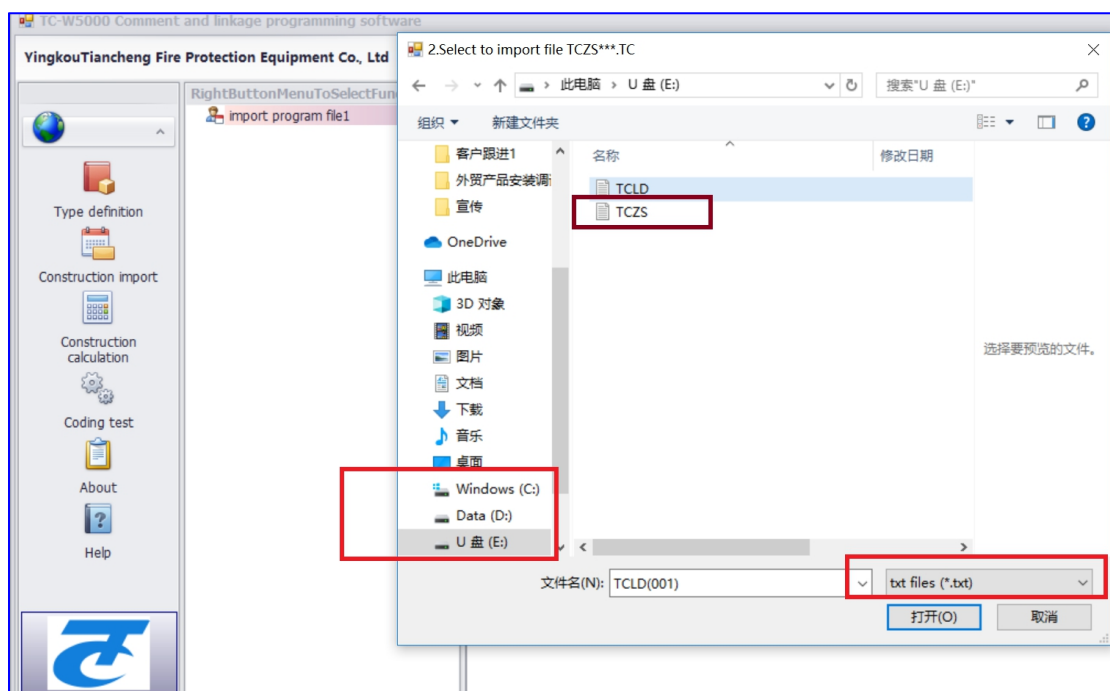
2.2.1 Press “Construction import”



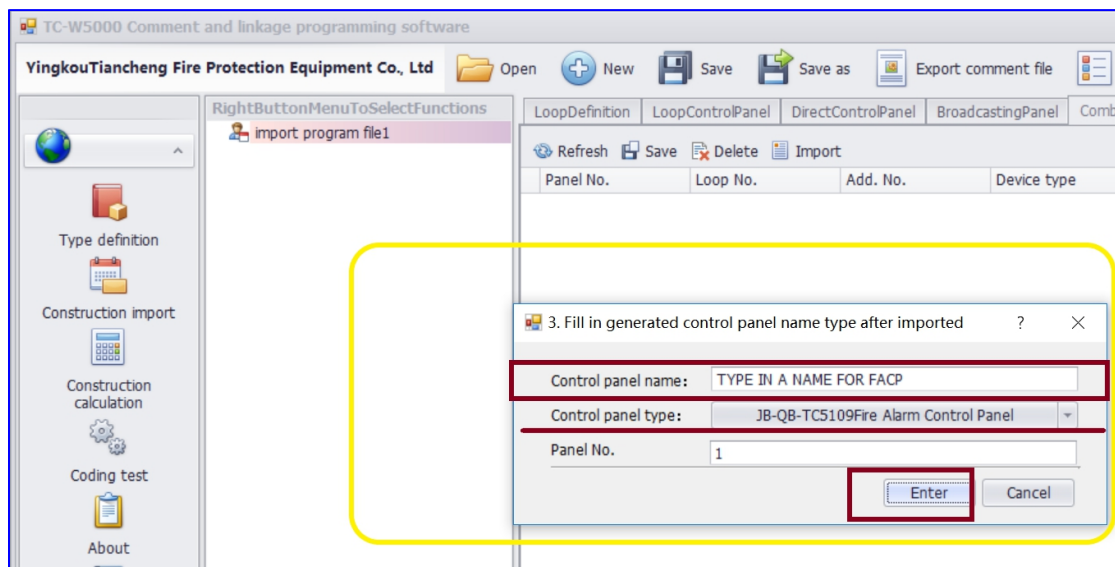
2.2.2 Type in a construction name, choose a path and press “Enter”.



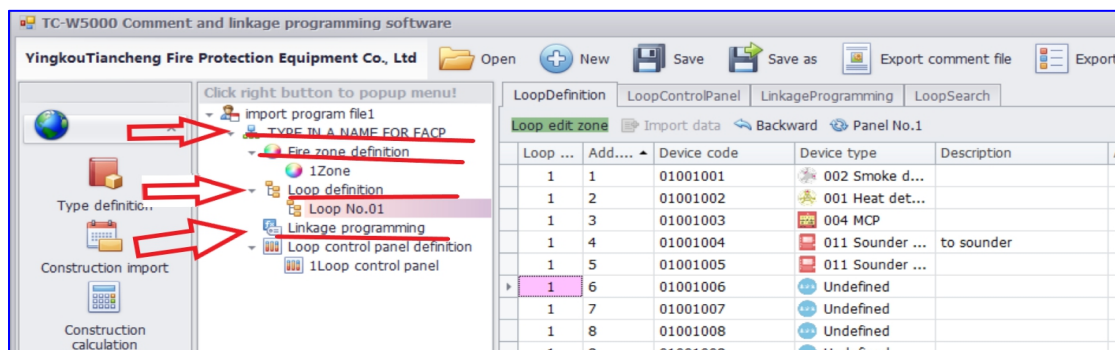
2.2.3 An interface appears. Select the location of the file that was uploaded in part 1, choose the file type “.txt”. then select the TCZX.TXT file and ENTER.



2.2.4 There will be a interface needed to be filed, control panel name/choose a type like 5109/panel No. 1 and press “Enter” to confirm.



2.2.5 The date will be loaded, you can click the arrow mark to unfold the details. The devices details and the programs will be there.



2.2.6 Choose loop definition or linkage programming to reedit the 2nd code or the programs.

Export the program file and download to FACP.

Thanks for using the Annotation and linkage programming software version 1.3.
Welcome to visit the home page of Yingkou Tiancheng Fire Equipment Co., LTD
for more information
www.tcfiretech.com