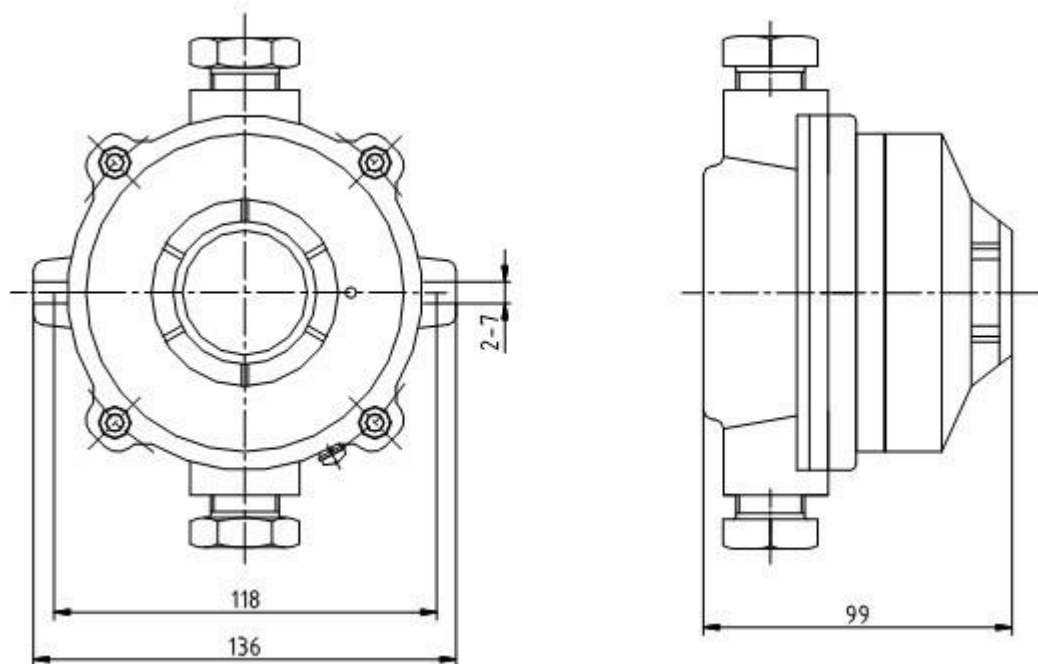


FBGW-YA3204 proof point type heat detectors sense temperature explosion proof thermal detectors

One, Explosion point type heat fire detectors Outline

FBGW-YA3204 proof point type heat detectors (the detectors) non-coding switching (relay output) detector suitable for installation in explosive gas atmospheres sites containing C level T6 temperature class can be any at home and abroad manufacturers of fire alarm controller supporting the use. This product meets the GB3836 series of standards, testing organization designated by the State identified and made explosion-proof certification. The detector is sensitive to temperature to detect the use of ambient temperature sensitive element, especially for a place to have a dramatic rise in case of fire. The detector has been connected with the barrier, using a special process, stable and reliable performance. The detector structure, beautiful appearance, and smoke detectors used in conjunction with more reliable fire detection.



II. Explosion warm feeling Technical parameters

- 1, proof in the form: intrinsically flameproof compound
- 2, explosion-proof mark: Exd (ib) IICT6
- 3, the working voltage: DC22V ~ DC26V
- 4, monitor current: $\leq 0.6\text{mA}$
- 5, alarm current: $10\text{mA} \leq I \leq 30\text{mA}$
6. Alarm reset: power restart
- 7, the alarm temperature: 60
- 8, contact capacity: 1A
- 9, alarm acknowledgment light: red, off the normal monitoring, alarm Always
- 10, the protection area: space height of 6 to 12 meters, to protect an area of 80

square meters; when space height of 6 meters, to protect an area of 60 square meters

11. Environment: Temperature: -20 ~ + 50 ; Relative humidity: ≤95% non-condensing; Atmospheric pressure: 80kPa ~ 110kPa

12, into the line diameter: 2-M22x1.5 (inlet of the number and size can be designed and manufactured according to user requirements)

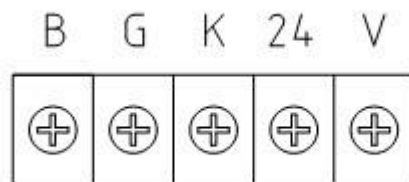
13, Weight: 1.2kg

3,Explosion Heat DetectorInstallation

According to the situation withM6Expansion screw orM6Screw mounting aperture through the detector which is fixed to the roof of explosion-proof enclosure.

4,Explosion Heat DetectorCabling and Wiring

Connection: the cable line in the figure are connected to the terminals



24 V: DC24V (non-polar); BG: normally closed contact; KG: normally open contact

Caveat: When the product is connected to the system, required outer diameter of about 8mmThe cable is connected, otherwise the detector will lose proof performance.

5, Precautions

5.1Prohibited places in the explosive demolition charged.

5.2Do not damage the installation surface explosion,And keep it clean. Proof surface fastening screws should be tightened evenly, do not pay attention to foreign material surface explosion.

5.3Long-term use to regularly detect whether performance of the detector in good condition, to be repaired by a professional such as a failure or damage.