

# Content

- 01**    **Automatic Fire Alarm System**
- 12**    **Gas Fire-extinguishing Control System**
- 13**    **Graphic Display Unit**
- 14**    **Explosion-proof System**
- 15**    **Intrinsically Safe System**
- 16**    **Combustible Gas Alarm Control System**
- 17**    **Aspirating Smoke Detection and Alarm System**
- 18**    **Smart Safety Home System**
- 20**    **Smart Fire Protection System**

**JTY-GM-TC5101 / JTY-GM-TC5161 Addressable Photoelectric Smoke Detector**

Voltage	Loop : DC24V(18.5V~26V)
Current	Standby Current: ≤0.3mA; Alarm Current: ≤0.8mA
Operating Environment	Temperature: -10°C~+55°C, Relative Humidity: ≤95%, non-condensing
Ingress Protection rating	IP 23
Mounting Hole Distance	60mm
Dimension	100mm×51mm (with base)
Approval	CCCF/LPCB, CE, GOST

**JTW-ZOM-TC5122 / JTW-ZOM-TC5162 Addressable Rate of Rise & Fixed Temperature Heat Detector**

Voltage	Loop : DC24V(18.5V~26V)
Current	Standby Current: ≤0.3mA; Alarm Current: ≤0.8mA
Operating Environment	Temperature: -10°C~+50°C, Relative Humidity: ≤95%, non-condensing
Ingress Protection Rating	IP 33
Mounting Hole Distance	60mm
Dimension	100mm×50mm (with base)
Approval	CCCF/LPCB, CE, GOST

**JTF-GOM-TC5103 Addressable Combination Heat & Smoke Detector**

Voltage	Loop : DC24V(16V~28V)
Current	Standby Current: ≤0.3mA; Alarm Current: ≤0.9mA
Operating Environment	Temperature: -10°C~+55°C, Relative Humidity: ≤95%, non-condensing
Dimension	100mm×50mm (with base)
Mounting Hole Distance	60mm
Approval	CCCF, CE

**JTY-GD-TC901 Independent Photoelectric Smoke Detector**

Power Supply	6F22 DC9V battery
Current	Standby Current: ≤5uA; Alarm Current: ≤7mA
Operating Environment	Temperature: -10°C~+50°C; Relative Humidity: ≤90%, non-condensing
Mounting Hole Distance	60mm
Dimension	100mm×54mm (with base)
Approval	CCCF, CE



## TCBM5023 Handheld Encoder

Current	Standby Current: $\leq 2\text{mA}$ ; Operating Current: $\leq 40\text{mA}$
Power	1.5V/Battery $\times 2$
Operating Environment	Temperature: $-10^{\circ}\text{C} \sim +50^{\circ}\text{C}$ ; Relative Humidity: $\leq 90\%$ , non-condensing
Dimension	120mm $\times$ 86mm $\times$ 48mm
Approval	CCCF, LPCB, CE, GOST



## TCMK5260 Loop Isolator

Voltage	Loop DC24V(18.5~26V)
Current	Standby Current $\leq 5.5\text{mA}$ , Action Current $\leq 25\text{mA}$
Operating Environment	Temperature: $0^{\circ}\text{C} \sim +49^{\circ}\text{C}$ ; Relative Humidity: $\leq 95\%$ , non-condensing
Mouting Hole Distance	60mm
Dimension (L $\times$ W $\times$ H)	86mm $\times$ 41mm $\times$ 86mm (with base)
Working Mode	Matchd with JB-TB-TC5109
Approval	LPCB, CE, GOST



## TCMK5210 Loop Isolator

Threshold Current	Action Current $\leq 170\text{mA}$ or $270\text{mA}$ (B and ZX2 short circuit here)
Load Capacity	Loop 24V, 170mA; Loop 24V, 270mA (B and ZX2 short circuit here)
Operating Environment	Temperature: $-10^{\circ}\text{C} \sim +50^{\circ}\text{C}$ ; Relative Humidity: $\leq 95\%$ , non-condensing
Mouting Hole Distance	60mm
Dimension (L $\times$ W $\times$ H)	86mm $\times$ 38mm $\times$ 86mm (with base)
Working Mode	Matchd with JB-TG-TC5000, JB-LT-TC5200, JB-TB-TC5100, JB-TB-TC5120, JB-QB-TC5160
Approval	LPCB, CE, GOST



## TCMK5211 Addressable Single Input Module

Voltage	Loop : DC24V(16V~28V)
Current	Standby Current: $\leq 0.2\text{mA}$ ; Alarm Current: $\leq 0.8\text{mA}$
Operating Environment	Temperature: $-10^{\circ}\text{C} \sim +55^{\circ}\text{C}$ ; Relative Humidity: $\leq 95\%$ , non-condensing
Mouting Hole Distance	60mm
Dimension (L $\times$ W $\times$ H)	86mm $\times$ 38mm $\times$ 86mm (with base)
Working Mode	Matchd with JB-TG-TC5000, JB-LT-TC5200, JB-TB-TC5100, JB-TB-TC5120, JB-QB-TC5160
Approval	CCCF, CE



### TCMK5261 Addressable Single Input Module

Voltage	Loop : DC24V(16V~28V)
Current	Standby Current:≤0.2mA;Action Current:≤0.8mA
Operating Environment	Temperature: -10°C~+55°C;Relative Humidity: ≤95%, non-condensing
Mounting Hole Distance	60mm
Dimension (L×W×H)	86mm×38mm×86mm (with base)
Approval	GOST



### TCMK5213 Addressable Single I/O Module

Voltage	Loop:DC24V (16V~28V);Power: DC24V (20V~28V)
Standby Current	Loop: ≤0.2mA;Power: ≤2mA
Action Current	Loop: ≤2mA;Power: ≤22mA
Operating Environment	Temperature: -10°C~+55°C;Relative Humidity: ≤95%, non-condensing
Mounting Hole Distance	60mm
Dimension (L×W×H)	86mm×38mm×86mm (with base)
Approval	CCCF, CE



### TCMK5263 Addressable Single I/O Module

Voltage	Loop : DC24V (18.5V~26V);Power: DC24V (19V~28V)
Standby Current	Loop: ≤0.2mA;Power: ≤2mA
Action Current	Loop: ≤2mA;Power: ≤22mA
Operating Environment	Temperature: -10°C~+55°C;Relative Humidity: ≤95%, non-condensing
Mounting Hole Distance	60mm
Dimension (L×W×H)	86mm×38mm×86mm (with base)
Working Mode	Matchd with JB-TB-TC5109
Approval	LPCB, CE, GOST



### TCMK5268 Addressable Single I/O Module(Loop Power)

Voltage	Loop: DC24V (16V~28V)
Current	Standby Current:≤0.3mA; Action Current:≤2mA
Operating Environment	Temperature: -10°C~+55°C;Relative Humidity: ≤95%, non-condensing
Mounting Hole Distance	60mm
Dimension (L×W×H)	86mm×40mm×86mm (with base)
Approval	GOST



## TCMK5223 Addressable Single I/O Module(Loop Powered)

Voltage	Loop: DC24V (16V~28V)
Current	Standby Current:≤0.3mA; Action Current:≤2mA
Operating Environment	Temperature: -10°C~+55°C;Relative Humidity: ≤95%, non-condensing
Mounting Hole Distance	60mm
Dimension (L×W×H)	86mm×40mm×86mm (with base)
Approval	CCCF, CE



## TCMK5217 Interposing Relay Module

Voltage	Loop: DC24V (20V~28V)
Current	Standby Current: ≤4.5mA; Action Current: ≤45mA
Operating Environment	Temperature: -10°C~+55°C;Relative Humidity: ≤95%, non-condensing
Dimension (L×W×H)	86mm×38mm×86mm (with base)
Approval	CCCF



## TCSG5266 Addressable Sounder Strobe

Voltage	Loop: DC24V (18.5V~26V);Power: DC24V (19V~28V)
Standby Current	Loop: ≤0.2mA;Power: ≤0.5mA
Active Current	Loop: ≤1.5mA;Power: ≤30mA
Operating Environment	Temperature: -10°C~+50°C; Relative Humidity: ≤95% ( 40±2°C )
Sound Level	80dB~115dB (A weighted)
Dimension (L×W×H)	115mm×55.3mm×140mm
Approval	LPCB, CE, GOST



## TCSG5228F Conventional Sounder Strobe

Voltage	Power: DC24V (19V~28V)
Active Current	≤50mA
Operating Environment	Temperature: -10°C~+50°C; Relative Humidity: ≤95% ( 40±2°C )
Sound Level	75dB~115dB (A weighted)
Dimension (L×W×H)	115mm×55.3mm×140mm
Approval	CCCF



### J-SAP-TCSB5264/J-SAP-TCSB5264-RU Digital Manual Call Point

Voltage	Loop : DC24V(16V-28V)
Current	Standby Current: $\leq 0.2\text{mA}$ ; Alarm Current: $\leq 0.8\text{mA}$
Operating Environment	Temperature: $-10^{\circ}\text{C} \sim +55^{\circ}\text{C}$ ; Relative Humidity: $\leq 95\%$ , non-condensing
Mounting Hole Distance	60mm
Dimension (L×W×H)	95mm×44mm×95mm (with base)
Approval	LPCB, CE/GOST



### TCXH5215 Fire Hydrant Button

Voltage	Loop: DC24V(16V-28V)
Current	Standby Current: $\leq 0.2\text{mA}$ ; Startup Current: $\leq 1.5\text{mA}$
Operating Environment	Temperature: $-10^{\circ}\text{C} \sim +55^{\circ}\text{C}$ ; Relative Humidity: $\leq 95\%$ , non-condensing
Dimension (L×W×H)	95mm×44mm×95mm (with base)
Approval	CCCF, CE



### J-SAP-TCSB5214H Digital Manual Call Point (with Jack)

Voltage	Loop : DC24V(16V-28V)
Current	Standby Current: $\leq 0.2\text{mA}$ ; Alarm Current: $\leq 0.8\text{mA}$
Operating Environment	Temperature: $-10^{\circ}\text{C} \sim +55^{\circ}\text{C}$ ; Relative Humidity: $\leq 95\%$ , non-condensing
Dimension (L×W×H)	95mm×44mm×95mm (with base)
Approval	CCCF



## **TCSG5230R/TCSG5267 Addressable Sounder Strobe (Loop Powered)**

Voltage	DC24V (16V~28V)
Current	Standby Current: $\leq 0.4\text{mA}$ ; Action Current: $\leq 5\text{mA}$
Operating Environment	Temperature: $-10^{\circ}\text{C} \sim +50^{\circ}\text{C}$ ; Relative Humidity: $\leq 95\%$ ( $40 \pm 2^{\circ}\text{C}$ )
Sound Level	75dB~115dB (A weighted)
Dimension	$\phi 101\text{mm} \times 51\text{mm}$
Approval	CCCF/GOST



## **TCSG5230 Addressable Sounder Strobe (Four-wired)**

Voltage	Loop: DC24V (16V~28V); Power: DC24V(18V-28V)
Standby Current	Loop: $\leq 0.4\text{mA}$ ; Power: 0.5mA
Action Current	Loop: $\leq 1.2\text{mA}$ ; Power: $\leq 15\text{mA}$
Operating Environment	Temperature: $-10^{\circ}\text{C} \sim +50^{\circ}\text{C}$ ; Relative Humidity: $\leq 95\%$ ( $40 \pm 2^{\circ}\text{C}$ )
Sound Level	75dB~115dB (A weighted)
Dimension	$\phi 101\text{mm} \times 51\text{mm}$
Approval	CCCF



## **TCSG5230F Conventional Sounder Strobe**

Voltage	Power: DC24V (19V~28V)
Current	Standby Current: $\leq 0.5\text{mA}$ ; Action Current: $\leq 15\text{mA}$
Operating Environment	Temperature: $-10^{\circ}\text{C} \sim +50^{\circ}\text{C}$ ; Relative Humidity: $\leq 95\%$ ( $40 \pm 2^{\circ}\text{C}$ )
Sound Level	75dB~115dB (A weighted)
Dimension	$\phi 101\text{mm} \times 51\text{mm}$
Approval	CCCF

CE



### JB-TG-TC5000 Automatic Fire Alarm Control Panel (Linkage)

Mains	AC220V (5A); Voltage Range: +10%~-15%
Battery	12V/12AH sealed lead acid battery *2
LCD Screen Size	7-inch color LCD screen; Resolution: 800×480
Operating Environment	Temperature: -10°C~+50°C; Relative Humidity: ≤95%, non-condensing
Capacity	255-16320 addressable points; 1-64 loops
Communication Interface	RS232, RS485, CAN, USB
Dimension (L×W×H)	600mm×480mm×1800mm
Approval	CCCF, CE

CE



### JB-LT-TC5200 Automatic Fire Alarm Control Panel (Linkage)

Mains	AC220V (5A); Voltage Range: +10%~-15%
Battery	12V/12AH sealed lead acid battery *2
LCD Screen Size	7-inch color LCD screen; Resolution: 800×480
Operating Environment	Temperature: -10°C~+50°C; Relative Humidity: ≤95%, non-condensing
Capacity	255-16320 addressable points; 1-64 loops
Communication Interface	RS232, RS485, CAN, USB
Dimension (L×W×H)	1068mm×993mm×1335mm
Approval	CCCF, CE

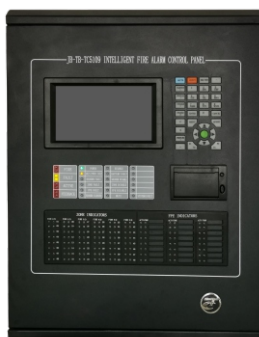


# Automatic Fire Alarm System



## JB-TB-TC5100 Automatic Fire Alarm Control Panel (Linkage)

Mains	AC220V (5A); Voltage Range: +10%~-15%
Battery	12V/12AH sealed lead acid battery *2
LCD Screen Size	7-inch color LCD screen; Resolution: 800×480
Operating Environment	Temperature: -5°C~+50°C; Relative Humidity: ≤95%, non-condensing
Capacity	255~1020 addressable points; 1~4 Loops
Communication Interface	RS232, RS485, CAN, USB
Dimension (L×W×H)	500mm×175mm×700mm
Approval	CCCF, CE



## JB-TB-TC5109/JB-TB-TC5109-RU Automatic Fire Alarm Control Panel (Linkage)

Mains	AC230V (4A); Voltage Range: +10%~-15%
Battery	12V/12AH sealed lead acid battery *2
LCD Screen Size	7-inch color LCD screen; Resolution: 800×480
Operating Environment	Temperature: -5°C~+50°C; Relative Humidity: ≤95%, non-condensing
Capacity	255~1020 addressable points; 1~4 Loops; up to 48 zones; Up to 24 FPEs
Communication Interface	RS485, CAN, USB
Dimension (L×W×H)	420mm×140mm×560mm
Approval	CCCF, CE, LPCB / GOST



## JB-TB-TC5120 Automatic Fire Alarm Control Panel (Linkage)

Mains	AC220V (3A); Voltage Range: +10%~-15%
Battery	12V/12AH sealed lead acid battery *2
LCD Screen Size	7-inch color LCD screen; Resolution: 800×480
Operating Environment	Temperature: -5°C~+50°C; Relative Humidity: ≤95%, non-condensing
Capacity	64,128,192,255,510 addressable points; 1-2 Loops
Communication Interface	RS232, RS485, CAN, USB
Dimension (L×W×H)	360mm×130mm×480mm
Approval	CCCF, CE



## JB-QB-TC5160 Automatic Fire Alarm Control Panel (Linkage)

Mains	AC220V (3A); Voltage Range: +10%~-15%
Battery	12V/12AH sealed lead acid battery *2
LCD Screen Size	7-inch color LCD screen; Resolution: 800×480
Operating Environment	Temperature: -5°C~+50°C; Relative Humidity: ≤95%, non-condensing
Capacity	64,128,192,255 addressable points; 1 Loop
Communication Interface	RS232, RS485, CAN, USB
Dimension (L×W×H)	320mm×120mm×400mm
Approval	CCCF, CE

CE

**TCFS5089 Fire Display Panel**

Voltage	Loop : DC24V(16V-28V); Power: DC24V(20V-28V)
Current	Standby Current: loop: $\leq 1.1$ mA , Power: $\leq 9$ mA ; Alarm Current: Loop: $\leq 2$ mA, Power: $\leq 45$ mA
Operating Environment	Temperature: $-10^{\circ}\text{C} \sim +50^{\circ}\text{C}$ ; Relative Humidity: $\leq 95\%$ , non-condensing
Wiring	Four-wired
Dimension (L×W×H)	180mm×110mm×40mm (with base)
Approval	CCCF, CE

CE

**TC5012/TC5012A Loop Control Panel**

Voltage	DC20V-DC28V
Capacity	64/128Points
Operating Environment	Temperature: $0^{\circ}\text{C} \sim +40^{\circ}\text{C}$ ; Relative Humidity: $\leq 95\%$ , non-condensing
Dimension	482mm×88.5mm (64Points); 482mm×177.3mm (128Points)
Working Mode	Integrated with JB-TG-TC5000/JB-LT-TC5200
Approval	CCCF, CE

CE

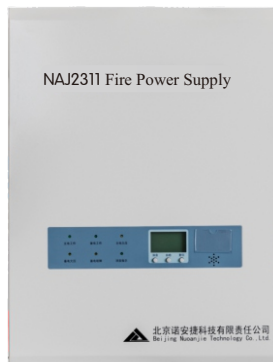
**TC5013 Direct Control Panel**

Voltage	VoltageDC20V-DC28V
Output Capacity	Max.15loops
Operating Environment	Temperature: $0^{\circ}\text{C} \sim +40^{\circ}\text{C}$ ; Relative Humidity: $\leq 95\%$ , non-condensing
Working Mode	Integrated with JB-TG-TC5000/JB-LT-TC5200
Dimension	482mm×88.5mm
Approval	CCCF, CE

CE

**TC-DY5200 Power Supply Panel**

Input Voltage	AC220V
Rated DC Output	DC27V/30A
Working Mode	Integrated with JB-TG-TC5000/JB-LT-TC5200
Communication Interface	RS 485
Operating Environment	Temperature: $-10^{\circ}\text{C} \sim +50^{\circ}\text{C}$ ;Relative Humidity: $\leq 95\%$ ( $40 \pm 2^{\circ}\text{C}$ )
Dimension	482mm×282mm×88.5mm (2U)
Approval	CCCF, CE

**NAJ2311 Fire Power Supply**

Voltage	AC187-242V;50HZ $\pm 1\%$
Battery	DC21V-DC28V
Rated Output	Voltage:DC27V; Current:10A; Power:270W
Operating Environment	Temperature: $0^{\circ}\text{C} \sim +40^{\circ}\text{C}$ ; Relative Humidity: $\leq 95\%$ , non-condensing
Battery Dimension	150mm×98mm×95mm; 3.3KG
Approval	CCCF

# Automatic Fire Alarm System



## NAJ2210 Fire Telephone Panel

Power	DC24V±10%; Max. Current:0.5A
Loop Resistance	70 Ω
Capacity	Max. 90Points
Distance	Max. 1500m
Extension Consumption	Standby Current<1mA; Speaking Current<20mA
Operating Environment	Temperature: -10°C~+55°C; Relative Humidity: ≤95%
Working Mode	Integrated with JB-TG-TC5000/JB-LT-TC5200
Battery Dimension	482mm×219mm×133mm
Approval	CCCF, CE



## NAJ2212 Telephone Extension

Frequency Range	300-3400Hz
Sound Level	≥70dB
Current Consumption	Standby Current:<1mA; Speaking Current:<25mA
Operating Environment	Temperature: -10°C~+55°C; Relative Humidity: ≤95%
Dimension	208mm×80mm×40mm
Mounting Hole Distance	135mm
Approval	CCCF



## NAJ2214 Telephone Extension

Frequency Range	300-3400Hz
Operating	<22mA
Operating Environment	Temperature: -10°C~+55°C; Relative Humidity: ≤95%
Function	Matched with NAJ2213&NAJ2215
Dimension	204mm×50mm×38mm
Mounting Hole Distance	100mm
Approval	CCCF



## NAJ2213 Telephone Jack

Frequency Range	300-3400Hz
Current Consumption	Standby Current:<1mA; Speaking Current:<25mA
Operating Environment	Temperature: -10°C~+55°C;Relative Humidity: ≤95%
Wiring Mode	Loop
Dimension	86mm×86mm×28mm
Mounting Hole Distance	100mm
Approval	CCCF



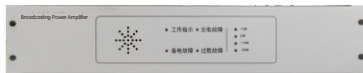
## NAJ2215 Telephone Jack

Frequency Range	300-3400Hz
Current Consumption	Standby Current:<0.1mA; Speaking Current:<25mA
Operating Environment	Temperature: -10°C~+55°C; Relative Humidity: ≤95%
Wiring Mode	Direct
Dimension	86mm×86mm×28mm
Mounting Hole Distance	100mm
Approval	CCCF



### NAJ2-500 Fire Emergency Broadcasting Device

Voltage	AC220V
Output	Constant 120V
Rated Power	2000W
Record Capacity	Max.999
Operating Environment	Relative Humidity: ≤95%, non-condensing
Dimension (L×W×H)	600mm×480mm×1800mm
Approval	CCCF



### NAJ2110 / NAJ2130 / NAJ2150 Broadcasting Power Amplifier

Input Level	755mV
Output	Constant 120V
Input Impedance	600 Ω
Rated Power	NJA2110-150W; NAJ2130-300W; NAJ2150-500W
Operating Environment	Temperature: -10°C~+50°C; Relative Humidity: ≤90%
Working Mode	Integrated with JB-TG-TC5000/JB-LT-TC5200
Dimension (L×W×H)	428mm×89mm×283mm
Approval	CCCF, CE



### NAJ2180 Broadcasting Control Panel

Voltage	DC24V
Current	0.16A
Operating Environment	Temperature: -10°C~+50°C; Relative Humidity: ≤95%
Working Mode	Integrated with JB-TG-TC5000/JB-LT-TC5200
Dimension	482mm×170mm×133mm
Approval	CCCF, CE



### TCMK5216 Output Module(Broadcasting Module)

Voltage	Loop:DC24V (16V~28V); Power: DC24V (20V~28V)
Standby Current	Loop: ≤0.2mA;Power: ≤2mA
Action Current	Loop: ≤1.5mA;Power: ≤15mA
Operating Environment	Temperature: -10°C~+55°C; Relative Humidity: ≤95%, non-condensing
Output Capacity	6W/Module
Dimension (L×W×H)	86mm×86mm×40mm (with base)
Approval	CCCF

## Gas Fire-extinguishing Control System

CE



### JB-QB-QTC5015 Gas Fire-extinguishing Control Panel

Mains	AC220V (3A); Voltage Range: +10%~-15%
Battery	DC24V(10A); 12V/12AH sealed lead acid battery *2
LCD Screen	4-inch color LCD screen; Resolution: 272×480
Operating Environment	Temperature: 0°C~+40°C; Relative Humidity: ≤95%, non-condensing
Capacity	255~510 points / 1~2 loops / 2~4 zones
Dimension (L×W×H)	385mm×134mm×510mm
Approval	CCCF, CE

CE



### TC-S5701 Auto/manual Switch Module

Voltage	Loop : DC24V(16V~28V)
Current	≤1mA
Operating Environment	Temperature: -10°C~+55°C; Relative Humidity: ≤95%, non-condensing
Dimension (L×W×H)	86mm×86mm×38mm (with base)
Approval	CCCF, CE

CE



### TC-L5719 Gas Extinguishing Indicator

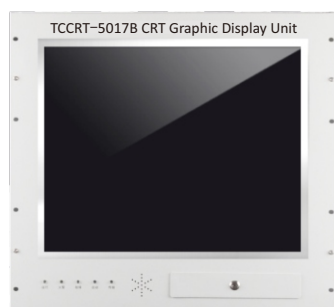
Voltage	Loop : DC24V(16V~28V)
Current	≤250mA
Operating Environment	Temperature: -10°C~+55°C; Relative Humidity: ≤95%, (40±2°C)
Dimension (L×W×H)	298mm×30mm×135mm
Approval	CE

CE



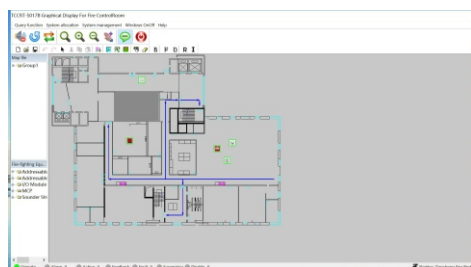
### TC-S5713 Emergency Start/Abort Button

Voltage	Loop : DC24V(16V~28V)
Current	≤1mA
Operating Environment	Temperature: -10°C~+55°C; Relative Humidity: ≤95%, (40±2°C)
Dimension (L×W×H)	80mm×55mm×100mm(with base)
Mounting Hole	60mm
Approval	CE



## TCCRT-5017B Graphic Display Unit

Voltage	AC220V(AC185V~AC242V), 50Hz+1Hz
Current	300mA
LED Screen	19 inch
Operating Environment	Temperature: 0°C~+40°C; Relative Humidity: ≤95%
Interface	RS232, RS485, LAN/WAN
Dimension (L×W×H)	482mm×183mm×444mm
Approval	CCCF, CE



## TCCRT-5017B Graphic Display Software

Operating System	Win 7, Win 10, 32 bit, 64 bit
Accessories	RS 485 to USB Converter



## JB-LF-TC5200 / Single Knot Table Cabinet

- Configured with TCCRT-5017B Graphic Display Unit





## JTGB-IR3-TC803 Addressable Infrared Flame Detector

Voltage	DC24V(20V~28V)
Current	≤30mA
Detection Distance	≤25m
Operating Environment	Temperature: -30°C~+60°C; Relative Humidity: ≤95%, Altitude<5000m
Explosion-proof Sign	Exib II C T6 GB/DIP A20 TA, T6
Protection Level	IP 66
Dimension (L×W×H)	203mm×127mm×104mm ,Thread Dia.7mm
Approval	CCCF



## JTGB-IV-TC601 Addressable Ultraviolet Flame Detector

Voltage	DC24V(20V~28V)
Current	≤45mA
Detection Distance	≤25m
Operating Environment	Temperature: -30°C~+60°C; Relative Humidity: ≤95%, Altitude<5000m
Explosion-proof Sign	Exib II C T6 GB/DIP A20 TA, T6
Protection Level	IP 66
Dimension (L×W×H)	203mm×127mm×104mm ,Thread Dia.7mm
Approval	CCCF



## TCSG5240B Fire Alarm Sounder

Voltage Power	DC24V(18V~30V)
Current	≤12mA
Operating Environment	Temperature: -20°C~+50°C; Relative Humidity: ≤95%, Pressure:80-110kPa
Explosion-proof Sign	Exib II C T6
Flash Frequency	1Hz-1.5Hz
Sound Level	75dB-115dB
Approval	CCCF



## TCXH5231-EX Hydrant Button

Voltage	DC24V(18V~28V)
Current	≤100mA
Operating Environment	Temperature: -20°C~+50°C; Relative Humidity: ≤95%, Pressure:80-110kPa
Explosion-proof Sign	Exib II C T6
Mounting	Hole Distance 60mm; Dimension 96mm
Dimension (L×W×H)	147mm×158mm×70mm
Approval	CCCF



## J-SAP-TCSB5232-EX Manual Call Point

Voltage	DC24V(18V~28V)
Current	≤5mA
Operating Environment	Temperature: -20°C~+50°C; Relative Humidity: ≤95%, Pressure:80-110kPa
Explosion-proof Sign	Exib II C T6
Mounting	Hole Distance 60mm; Dimension 96mm
Dimension (L×W×H)	147mm×158mm×70mm
Approval	CCCF



## JTY-GM-TC5101 Ex-Addressable Photoelectric Smoke Detector

Voltage	Loop : DC24V(18V~28V)
Current	Standby Current: ≤0.3mA; Alarm Current: ≤0.8mA
Operating Environment	Temperature: -10°C~+55°C; Relative Humidity: ≤95%, non-condensing
Explosion-proof Sign	Exib II C T6
Mounting Hole Distance	60mm
Dimension	100mm×50mm (with base)
Approval	CCCF



## JTW-Z0M-TC5102 Ex-Addressable Heat Detector

Voltage	Loop : DC24V(18V~28V)
Current	Standby Current: ≤0.3mA; Alarm Current: ≤0.8mA
Operating Environment	Temperature: -10°C~+55°C; Relative Humidity: ≤95%, non-condensing
Explosion-proof Sign	Exib II C T6
Mounting Hole Distance	60mm
Dimension	100mm×51mm (with base)
Approval	CCCF



## J-SAP-TCSB5204 Ex-Manual Call Point

Voltage	Loop : DC24V(18V~28V)
Current	Standby Current: ≤0.3mA; Alarm Current: ≤0.8mA
Operating Environment	Temperature: -10°C~+55°C; Relative Humidity: ≤95%, non-condensing
Explosion-proof Sign	Exib II C T6
Mounting Hole Distance	60mm
Dimension	90mm×90mm (with base)
Approval	CCCF



## TCXH5205 Ex-Fire Hydrant Button

Voltage	Loop : DC24V(18V~28V)
Current	Standby Current: ≤0.2mA; Alarm Current: ≤1.5mA
Operating Environment	Temperature: -10°C~+55°C; Relative Humidity: ≤95%, non-condensing
Explosion-proof Sign	Exib II C T6
Mounting Hole Distance	60mm
Dimension	100mm×50mm (with base)
Approval	CCCF



# Combustible Gas Alarm Control System

CE



## JB-KR-TC5306 Combustible Gas Alarm Control Panel

Mains	AC220V (3A); Voltage Range: +10%~-15%
Battery	DC24V(6A)
Operating Environment	Temperature: 0°C~+40°C; Relative Humidity: ≤95%, non-condensing
Capacity	255 addressable points
Dimension (L×W×H)	320mm×120mm×400mm
Approval	CCCF, CE

CE



## JT-TC521 Independent Combustible Gas Detector of Measurement Range 0-100%LEL

Voltage	AC220V
Current	Standby Current:6mA, Alarm Current:7mA
Alarm Concentration	CH <sub>4</sub> , 8%LEL
Operating Environment	Temperature: -10°C~+50°C; Relative Humidity: ≤95%
Sound Level	>75dB
Dimension (L×W×H)	120mm×86mm×48mm
Approval	CCCF, CE

CE



## JT-TC518 Addressable Combustible Gas Detector of Measurement Range 0-100%LEL

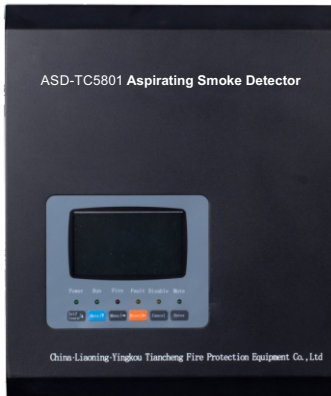
Voltage	Loop: DC24V(18V~28V); Power:DC24V(20V~28V)
Current	Standby Current:21mA, Alarm Current:28mA
Alarm Concentration	CH <sub>4</sub> , 8%LEL
Operating Environment	Temperature: -10°C~+50°C; Relative Humidity: ≤95%
Sound Level	>75dB
Dimension (L×W×H)	120mm×86mm×48mm
Approval	CCCF, CE

CE



## JT-TC516 Addressable Combustible Gas Detector of Measurement Range 0-100%LEL

Voltage	Loop: DC24V(18V~28V); Power:DC24V(20V~28V)
Current	Standby Current:21mA, Alarm Current:28mA
Alarm Concentration	CH <sub>4</sub> , 8%LEL
Operating Environment	Temperature: -10°C~+50°C; Relative Humidity: ≤95%
Sound Level	>75dB
Test Range	CH <sub>4</sub>
Dimension (L×W×H)	100mm×51mm(with base)
Approval	CCCF, CE



## ASD-TC5801 Aspirating Smoke Detector

Voltage	Loop:24V, Range : 16V~28V;
Standby Current	Power: DC24V, Range :DC20V~DC28V; Loop: ≤1mA; Bus: Standby Current≤1mA; Alarm Current≤1mA; Power Supply: Standby Current≤0.9 A; Alarm Current≤1 A
Relay Output	1A/24VDC, 1A/120VAC
Interface	Loop RS-485, CAN
Information Storage Capacity	Fire log: 1000 items Fault log: 1000 items Disable log: 1000 items
Max Sampling Length of Single Pipe	100m
Number of Sampling Loop	2
Dimensions (L×W×H)	290mm×125mm×350mm
Operating Environment	Temperature:-10℃~+55℃ Relative Humidity:10%~95%, non-condensing
Approval	CCCF



## ASD-TC5802 Aspirating Smoke Detector

Voltage	Loop:24V, Range : 16V~28V;
Standby Current	Power: DC24V, Range :DC20V~DC28V; Bus:Standby Current≤1mA; Alarm Current≤1mA; Power Supply: Standby Current≤1.8 A; Alarm Current≤2 A
Relay Output	1A/24VDC, 1A/120VAC
Interface	Loop RS-485, CAN
Information Storage Capacity	Fire log: 1000 items Fault log: 1000 items Disable log: 1000 items
Max Sampling Length of Single Pipe	100m
Number of Sampling Loop	4
Dimensions (L×W×H)	476mm×125mm×350mm
Operating Environment	Temperature:-10℃~+55℃ Relative Humidity:10%~95%, non-condensing
Approval	CCCF



## ASD-TC5821 Output Signal Interface

Voltage	Loop : DC24V(16V~28V)
Current	Standby Current:≤5mA;Alarm Current:≤40mA
Operating Environment	Temperature: -10℃~+55℃; Relative Humidity: ≤95%, non-condensing
Mouting Hole Distance	60mm
Dimension (L×W×H)	80mm×40.4mm×86mm(with base)
Approval	CCCF



### JB-TB-TC5140M Household Fire Alarm Controller (Wall-mounted)

Voltage	AC220V(187V~242V)
Battery	7.4V/1400MAh
Operating Environment	Temperature: -10°C~+55°C; Relative Humidity: ≤95%, non-condensing
Capacity	Max.255 points
Approval	CCCF



### JTY-GD-TC531W Addressable Household Smoke Detector (Wireless)

Power Supply	CR123A 3V
Current	Standby Current≤15uA; Alarm Current≤40mA
Communication Distance	≤50m
Operating Environment	Temperature: -10°C~+55°C; Relative Humidity: ≤95%, non-condensing
Communication Mode	470MHz FSK
Dimension	100mm×53mm (with base)
Approval	CCCF



### JTW-ZO-TC532W Addressable Household Heat Detector (Wireless)

Power Supply	CR123A 3V
Current	Standby Current≤15uA; Alarm Current≤40mA
Communication Distance	≤50m
Operating Environment	Temperature: -10°C~+55°C; Relative Humidity: ≤95%, non-condensing
Communication Mode	470MHz FSK
Dimension	100mm×54mm (with base)
Approval	CCCF



### J-SAP-TCSB536W Manual Call Point (Wireless)

Power supply	CR123A 3V
Current	Standby Current≤ 3uA; Alarm Current≤ 15mA
Communication Distance	≤50m
Operating Environment	Temperature: -10°C~+55°C; Relative Humidity: ≤95%, non-condensing
Communication Mode	470MHz FSK
Dimension	87mm×87mm×44mm
Approval	CCCF



### TCSG534W Fire Sounder(Wireless)

Power Supply	AC220V±15%
Current	Standby Current≤ 3mA; Alarm Current≤10mA
Communication Distance	≤300m
Operating Environment	Temperature: -10°C~+55°C; Relative Humidity: ≤95%, non-condensing
Communication Mode	470MHz FSK
Dimension	86mm×61mm
Approval	CCCF



### JT-TC533F Independent Combustible Gas Detector of Measurement Range 0-100%LEL(WiFi Version)

Power Supply	AC220V/50Hz
Current	Standby Current ≤ 4mA, Alarm Current ≤ 10mA
Communication Distance	≤50m
Detection Gas	Natural Gas
Operating Environment	Temperature:-10°C~+55°C; Relative Humidity: ≤95%, non-condensing
Communication Mode	470MHz FSK
Dimension	80mm×52mm
Approval	CCCF



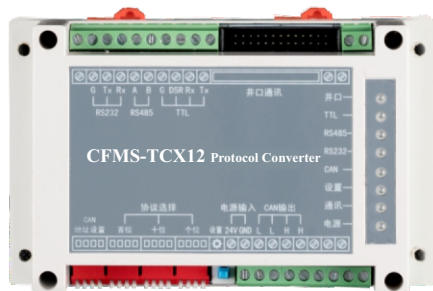
### JT-TC533W Independent Combustible Gas Detector of Measurement Range 0-100%LEL(Wireless)

Power Supply	AC220V/50Hz
Current	Standby Current ≤ 4mA, Alarm Current ≤ 10mA
Communication Distance	≤50m
Detection Gas	Natural Gas
Operating Environment	Temperature:-10°C~+55°C; Relative Humidity: ≤95%, non-condensing
Communication Mode	470MHz FSK
Dimension	80mm×52mm
Approval	CCCF



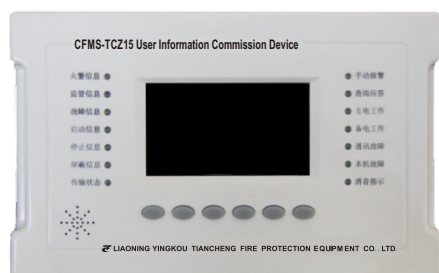
### TC-ZJ410 Wireless Repeater

Voltage	DC24V
Current	≤10mA
Operating Environment	Temperature: -10°C~+50°C; Relative Humidity: ≤95%, non-condensing
Communication Mode	470MHz FSK
Function	Communicate wireless products with wired control panels
Communication Distance	≤700m
Dimension	156mm × 153mm × 52.5mm
Approval	CCCF



## CFMS-TCX12 Protocol Converter

Power Supply	DC24V
Communication Mode	CAN , RS 232 , RS 485 , TTL
Operating Environment	Temperature: -10°C~+55°C; Relative Humidity: ≤95%, non-condensing
Communication Mode	470MHz FSK
Approval	CCCF



## CFMS-TCZ15 User Information Transmission Device

Power Supply	AC220V/50Hz
Communication Mode	CAN , RS 232 , RS 485
Standby Battery	Full charged 8 hours
Operating Environment	Temperature: -10°C~+55°C; Relative Humidity: ≤95%, non-condensing
Communication Mode	470MHz FSK
Approval	CCCF