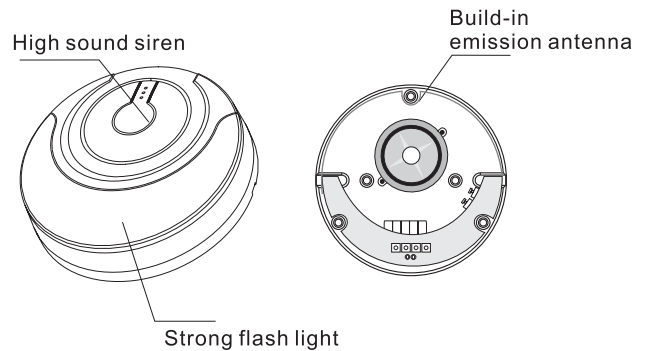


MD-214R Wireless Siren with Sound and Flash Light

1.Introduction

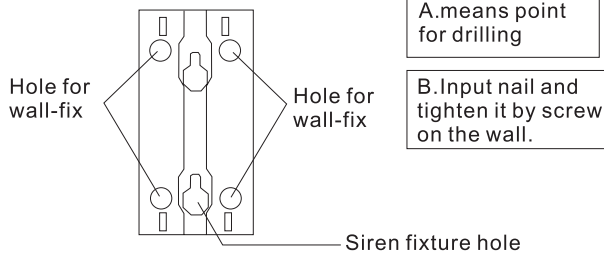
MD-214R wireless siren with sound and flash light is the alarm equipment has compatibility, it forms its power supply by the adaptor self-taking and the stand by battery; communicate with the wireless control panel in the form of wireless. It can be used in the alarm system realize the alarm function by sound and flash light, and it also can realize the function of alarm and disalarm answer. This siren has the tamper function, it also can be used together with control panel, magnetic switch, emergency bottom and so on, to realize the function of wireless prolong. At the same time, it has the function of high sound for frightening. With beautiful out look and high sound, it fit for to be installed in porch, window, and also good for family, office and market using.



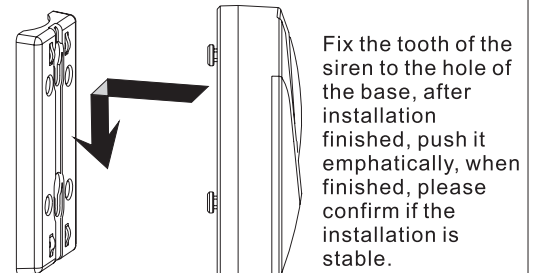
2.Installation sketch

1.installation base

4-4.8m above the basement



2.siren installation

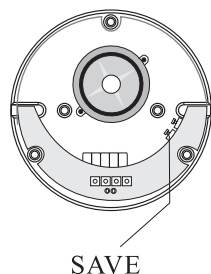


3..Function introduction

After connecting with power supply, the indication light of the wireless siren will flash without rhythm, when there is any lighting or out with rhythm, it means the wireless receiving blocked, it may because of the broken of the wireless siren or strong wave interference.

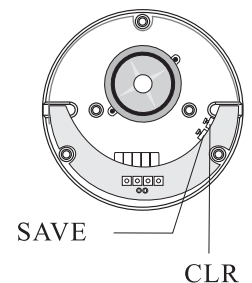
1.Coding

Press the key SAVE longer to touch the wireless alarm equipment, until the wireless siren sounds, then the code success, the wireless siren can code max 60 pcs wireless products, including the wireless control panel, independent wireless detector and remoter controller. All the 60pcs wireless equipment will make the wireless siren sounds.

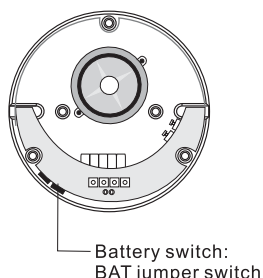


2.Delete code

In the station of disalarm, press the key SAVE and CLR at the same time, then the signal lamp will light for several seconds, and then extinguish, until lighting again, release the key SAVE and key CLR.

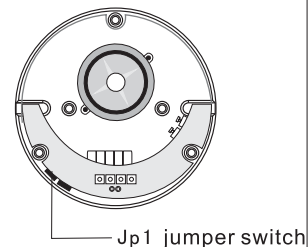


3. Battery, power supply and switch
BAT jumper is the switch that control the siren for power supply by battery or not, when the switch off, it is not the battery for power supply of the siren; when the power supply set not from the battery, the siren will be in the state of no power, and it will not work.

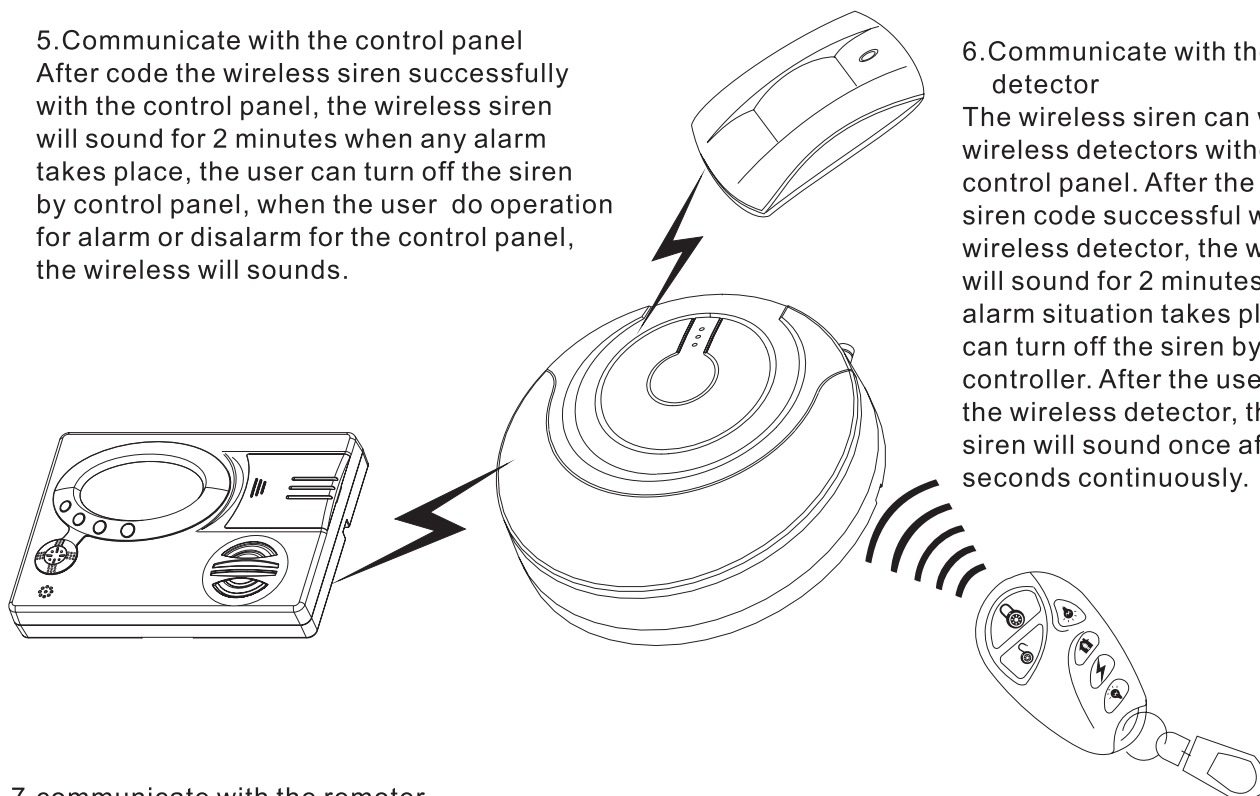


4. Volume control
“JJP1 jumper is the switch for controlling of the volume of the siren, when the switch off, the volume lower, and when the switch is on, the volume larger.

Remark: Do not join any pin of JP1 with the pin of battery jumper, or it will broken the siren.



5. Communicate with the control panel
After code the wireless siren successfully with the control panel, the wireless siren will sound for 2 minutes when any alarm takes place, the user can turn off the siren by control panel, when the user do operation for alarm or disalarm for the control panel, the wireless will sounds.



6. Communicate with the wireless detector
The wireless siren can work with wireless detectors without through control panel. After the wireless siren code successful with the wireless detector, the wireless siren will sound for 2 minutes when any alarm situation takes place; the user can turn off the siren by remoter controller. After the user dismantles the wireless detector, the wireless siren will sound once after several seconds continuously.

7. communicate with the remoter

The wireless siren can work with remoter controller without through control panel. After the wireless siren code successful with remoter controller, the user can turn off the siren by pressing the key RISK, and make the siren sounds for 2 minutes by the key HELP. Press the key DISALARM on the remoter controller, then the siren will sound for once, and then the siren closed, press the key ALARM on the remoter controller, then the wireless siren will sound for twice, and then the siren is turned on. Press the key LOCK and UNLOCK at the same time will enable the siren sounds for 2 minutes.

4. Technical parameter

Voltage	DC15V	Alarm sound	110dB
Current	8mA	Frequency	430/433MHZ
Current for alarm	≤500mA	Distance	30m