

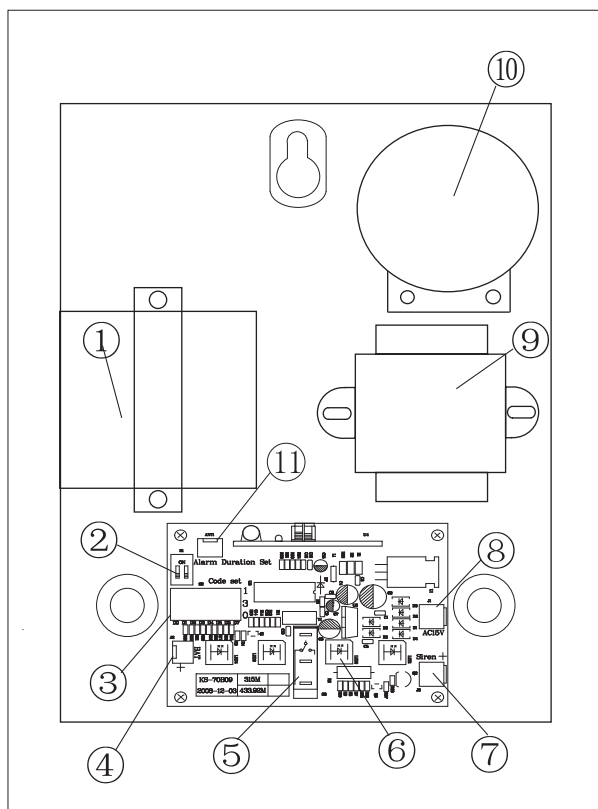
Wireless Outdoor Siren

Wireless Outdoor Siren adopts 8-digit single chip process. The user can choose the code by self that achieve multi-siren in the same code . It has enforce sound and light alarm function. The device equips with tamper and removes protected features. It is convenient and reliable.

Specification

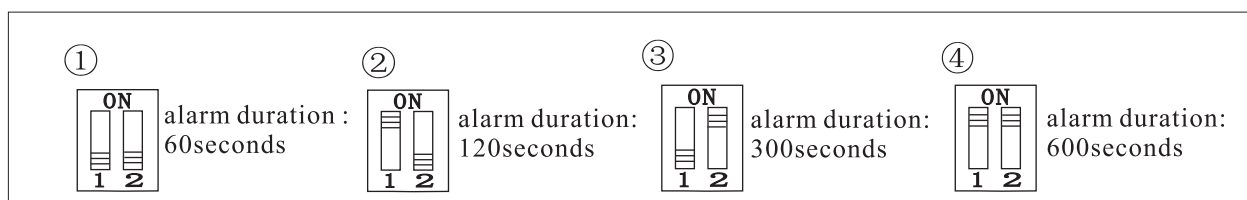
1. Working Power: AC220V \pm 15% 50Hz
- 2.Backup Battery: DC12V 700mAH (Rechargeable Storage Battery)
3. Standard current: \leq 13mA
- 4.Siren Volume: \geq 100dB
- 5.Working Frequency:433MHz
- 6.Distance: \geq 500m in open area
7. Physical Size: 235 x160 x 70 (mm) (L x W x H)
8. Physical Weight: 970g (Without battery)

Component

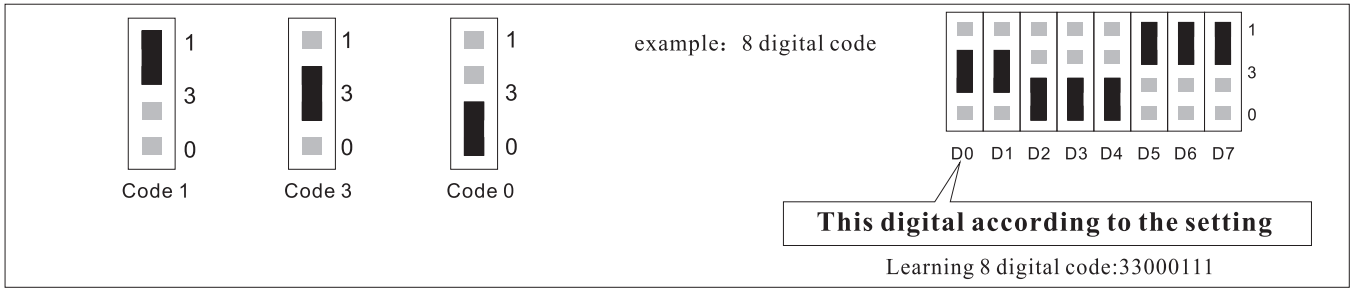


- ①**Backup Battery:** It provides power for system when AC power cut off.
- ②**Setup Switch:** Be used for siren duration setup, setting method as picture 1,after set up, need to on power again
- ③**Code Jumper:** Be used for siren receiving code setup, setting method as picture2, after set up, need to on power again .The 8 digit code attach on the bottom of shell
- ④**DC end:** 12V Backup battery input line junction
- ⑤**Tamper switch:** The interface connect with upper cover of siren tightly. It make alarm when meeting force open
- ⑥**Indicator:** Standby working state: indicator will be flash once every 15S .Flash quickly when make alarm
- ⑦**Siren Junction:** Connect with siren
- ⑧**AC power junction:** Transformer output line junction
- ⑨**Transformer:** To change AC220V to AC15V
- ⑩**Siren:** To be used alarm siren output and “Di..Di..Di..” power low indicate **Note:** shall avoid to be jammed.
- ⑪**Antenna Junction:** Connect with antenna

Picture 1 :



Picture 2:



Installation

